

Index of Bearing Tables

Split type

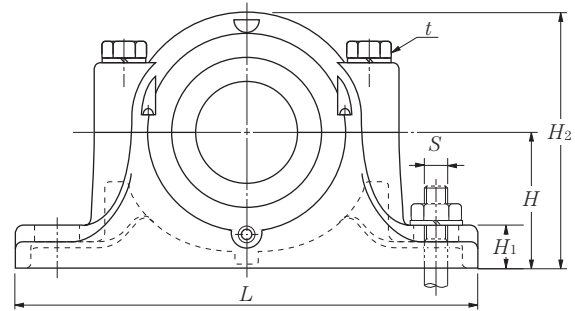
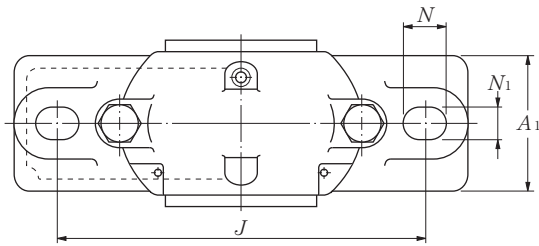
SN5	34
SN6·S6	36
SN30·SN31	38
SNZ2	40
SNZ3·SZ3	42
SD5·SD5G·SD6·SD6G	44
SD30·SD30G	46
SD31·SD31G	48
SD2·SD2G·SD3·SD3G	50

Unit type

SV5	52
SV2	56

Plummer Blocks SN5

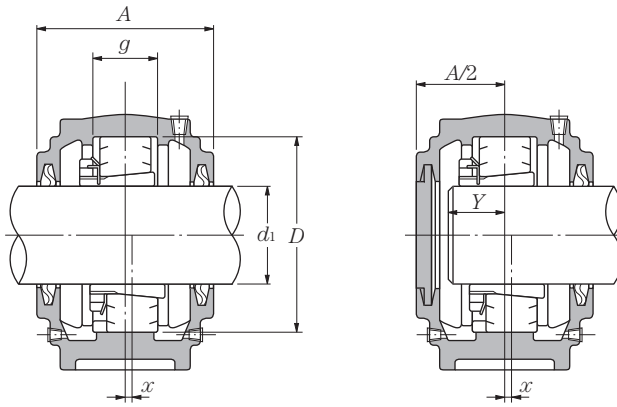
Standard type / For bearing with adapter assembly



d_1 25~140mm

Shaft dia. mm d_1	Bearing numbers	Abutment and fillet dimensions											Approx. S nominal number	Mass kg (approx.)	
		D	H	J	N	N_1	A	L	A_1	H_1	H_2	g			t nominal number
25	SN506	62	50	150	15	20	77	185	52	22	90	30	M8	M12	1.7
30	SN507	72	50	150	15	20	82	185	52	22	95	33	M10	M12	2.2
35	SN508	80	60	170	15	20	85	205	60	25	110	33	M10	M12	2.6
40	SN509	85	60	170	15	20	85	205	60	25	112	31	M10	M12	2.8
45	SN510	90	60	170	15	20	90	205	60	25	115	33	M10	M12	3.0
50	SN511	100	70	210	18	23	95	255	70	28	130	33	M12	M16	4.0
55	SN512	110	70	210	18	23	105	255	70	30	135	38	M12	M16	4.5
60	SN513	120	80	230	18	23	110	275	80	30	150	43	M12	M16	5.6
65	SN515	130	80	230	18	23	115	280	80	30	155	41	M12	M16	6.0
70	SN516	140	95	260	22	27	120	315	90	32	175	43	M16	M20	9.0
75	SN517	150	95	260	22	27	125	320	90	32	185	46	M16	M20	9.3
80	SN518	160	100	290	22	27	145	345	100	35	195	62.4	M16	M20	12
85	SN519	170	112	290	22	27	140	345	100	35	210	53	M16	M20	14
90	SN520	180	112	320	26	32	160	380	110	40	218	70.3	M20	M24	17
100	SN522	200	125	350	26	32	175	410	120	45	240	80	M20	M24	20
110	SN524	215	140	350	26	32	185	410	120	45	270	86	M20	M24	23
115	SN526	230	150	380	28	36	190	445	130	50	290	90	M24	M24	29
125	SN528	250	150	420	33	42	205	500	150	50	305	98	M24	M30	37
135	SN530	270	160	450	33	42	220	530	160	60	325	106	M24	M30	42
140	SN532	290	170	470	33	42	235	550	160	60	345	114	M24	M30	48

- ① The numeral in nominal number of the setting ring represents the outside diameter and width dimension.
- ② Dimension Y is an approximate distance from the bearing center to the shaft end for shaft end configuration.



Nominal number								Approx. mm Y ²⁾	Seal number	shaft dia. mm d ₁
Combination with self-aligning ball bearings				Combination with spherical roller bearings						
Self-aligning ball bearings	Adapter	Setting washer ¹⁾	Number	Spherical roller bearings	Adapter	Setting washer ¹⁾	Number			
1206SK 2206SK	H206X H306X	SR 62X 7 SR 62X10	2 1	—	—	—	—	18 20	ZF 6	25
1207SK 2207SK	H207X H307X	SR 72X 8 SR 72X10	2 1	—	—	—	—	19 22	ZF 7	30
1208SK 2208SK	H208X H308X	SR 80X 7.5 SR 80X10	2 1	22208EAKD1	H308X	SR 80X10	— 1	21 23	ZF 8	35
1209SK 2209SK	H209X H309X	SR 85X 6 SR 85X 8	2 1	22209EAKD1	H309X	SR 85X 8	— 1	22 24	ZF 9	40
1210SK 2210SK	H210X H310X	SR 90X 6.5 SR 90X10	2 1	22210EAKD1	H310X	SR 90X10	— 1	24 25	ZF10	45
1211SK 2211SK	H211X H311X	SR100X 6 SR100X 8	2 1	22211EAKD1	H311X	SR100X 8	— 1	25 27	ZF11	50
1212SK 2212SK	H212X H312X	SR110X 8 SR110X10	2 1	22212EAKD1	H312X	SR110X10	— 1	26 29	ZF12	55
1213SK 2213SK	H213X H313X	SR120X10 SR120X12	2 1	22213EAKD1	H313X	SR120X12	— 1	28 32	ZF13	60
1215SK 2215SK	H215X H315X	SR130X 8 SR130X10	2 1	22215EAKD1	H315X	SR130X10	— 1	30 33	ZF15	65
1216SK 2216SK	H216X H316X	SR140X 8.5 SR140X10	2 1	22216EAKD1	H316X	SR140X10	— 1	32 36	ZF16	70
1217SK 2217SK	H217X H317X	SR150X 9 SR150X10	2 1	22217EAKD1	H317X	SR150X10	— 1	34 38	ZF17	75
1218SK 2218SK	H218X H318X	SR160X16.2 SR160X11.2	2 2 —	22218EAKD1 23218EMKD1	H318X H2318X	SR160X11.2 SR160X10	— 2 1	35 40 46	ZF18	80
1219SK 2219SK	H219X H319X	SR170X10.5 SR170X10	2 1	22219EAKD1	H319X	SR170X10	— 1	37 43	ZF19	85
1220SK 2220SK	H220X H320X	SR180X18.1 SR180X12.1	2 2 —	22220EAKD1 23220EMKD1	H320X H2320X	SR180X12.1 SR180X10	— 2 1	39 45 52	ZF20	90
1222SK 2222SK	H222X H322X	SR200X21 SR200X13.5	2 2 —	22222EAKD1 23222EMKD1	H322X H2322X	SR200X13.5 SR200X10	— 2 1	42 50 58	ZF22	100
—	—	—	—	22224EAKD1 23224EMKD1	H3124X H2324X	SR215X14 SR215X10	2 1	53 62	ZF24	110
—	—	—	—	22226EAKD1 23226EMKD1	H3126 H2326	SR230X13 SR230X10	2 1	57 65	ZF26	115
—	—	—	—	22228EAKD1 23228EMKD1	H3128 H2328	SR250X15 SR250X10	2 1	60 70	ZF28	125
—	—	—	—	22230EAKD1 23230EMKD1	H3130 H2330	SR270X16.5 SR270X10	2 1	65 76	ZF30	135
—	—	—	—	22232EAKD1 23232EMKD1	H3132 H2332	SR290X17 SR290X10	2 1	71 83	ZF32	140

NOTE: 1) Sizes SN524 and greater are equipped with lifting eye bolts.

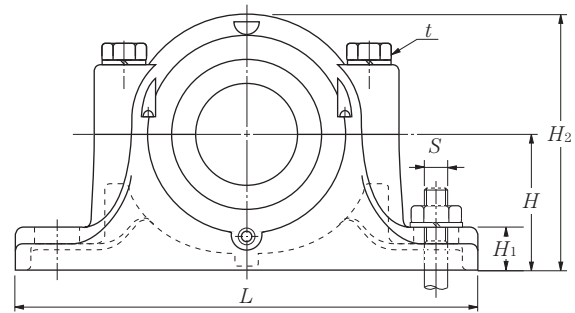
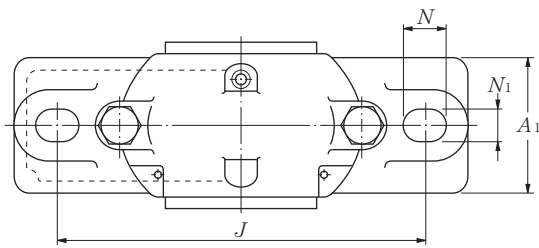
2) Fill and drain plugs size : SN506-SN520.....PT1/8
SN522-SN532.....PT1/4

3) Dimension X indicates a deviation of the bearing center relative to the plummer block center, and its value is 1/2 the width of the setting washer.

4) As an adaptor for bearing series 12, series H2 as well as series H3 can be used.

Plummer Blocks SN6·S6

Standard type / For bearing with adapter assembly

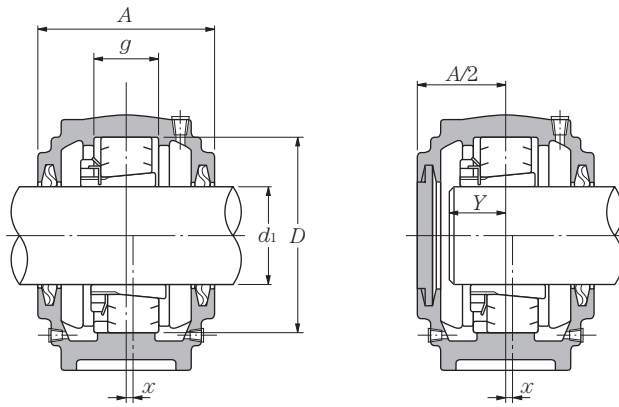


d_1 25~140mm

Shaft dia. mm	Bearing numbers	Abutment and fillet dimensions											Approx. ① S nominal number	Mass kg (approx.)
		D	H	J	N	N_1	A	L	A_1	H_1	H_2	t nominal number		
25	SN606	72	50	150	15	20	82	185	52	22	95	37	M10	2.3
30	SN607	80	60	170	15	20	90	205	60	25	110	41	M10	3.0
35	SN608	90	60	170	15	20	95	205	60	25	115	43	M10	3.1
40	SN609	100	70	210	18	23	105	255	70	28	130	46	M12	4.4
45	SN610	110	70	210	18	23	115	255	70	30	135	50	M12	5.0
50	SN611	120	80	230	18	23	120	275	80	30	150	53	M12	5.8
55	SN612	130	80	230	18	23	125	280	80	30	155	56	M12	7.7
60	SN613	140	95	260	22	27	130	315	90	32	175	58	M16	9.8
65	SN615	160	100	290	22	27	140	345	100	35	195	65	M16	12
70	SN616	170	112	290	22	27	145	345	100	35	212	68	M16	15
75	SN617	180	112	320	26	32	155	380	110	40	218	70	M20	17
80	S618	190	112	320	26	35	160	400	110	33	230	74	M20	21
85	S619	200	125	350	26	35	170	420	120	36	245	77	M20	24
90	S620	215	140	350	26	35	175	420	120	38	280	83	M20	29
100	S622	240	150	390	28	38	190	460	130	40	300	90	M24	38
110	S624	260	160	450	33	42	205	540	160	50	325	96	M24	47
115	S626	280	170	470	33	42	215	560	160	50	350	103	M24	54
125	S628	300	180	520	35	45	235	630	170	55	375	112	M30	70
135	S630	320	190	560	35	45	245	680	180	55	395	118	M30	75
140	S632	340	200	580	42	52	255	710	190	60	415	124	M30	80

① The numeral in nominal number of the setting ring represents the outside diameter and width dimension.

② Dimension Y is an approximate distance from the bearing center to the shaft end for shaft end configuration.



Nominal number								Approx. mm Y ²⁾	Seal number	shaft dia. mm d ₁
Combination with self-aligning ball bearings				Combination with spherical roller bearings						
Self-aligning ball bearings	Adapter	Setting washer ¹⁾	Number	Spherical roller bearings	Number	Setting washer ¹⁾	Number			
1306SK 2306SK	H306X H2306X	SR 72X 9 SR 72X10	2 1	—	—	—	—	19 23	ZF 6	25
1307SK 2307SK	H307X H2307X	SR 80X10 SR 80X10	2 1	—	—	—	—	21 26	ZF 7	30
1308SK 2308SK	H308X H2308X	SR 90X10 SR 90X10	2 1	21308CK 22308EAKD1	H308X H2308X	SR 90X10 SR 90X10	2 1	23 28	ZF 8	35
1309SK 2309SK	H309X H2309X	SR100X10.5 SR100X10	2 1	21309CK 22309EAKD1	H309X H2309X	SR100X10.5 SR100X10	2 1	25 31	ZF 9	40
1310SK 2310SK	H310X H2310X	SR110X11.5 SR110X10	2 1	21310CK 22310EAKD1	H310X H2310X	SR110X11.5 SR110X10	2 1	27 34	ZF10	45
1311SK 2311SK	H311X H2311X	SR120X12 SR120X10	2 1	21311K 22311EAKD1	H311X H2311X	SR120X12 SR120X10	2 1	29 36	ZF11	50
1312SK 2312SK	H312X H2312X	SR130X12.5 SR130X10	2 1	21312K 22312EAKD1	H312X H2312X	SR130X12.5 SR130X10	2 1	31 39	ZF12	55
1313SK 2313SK	H313X H2313X	SR140X12.5 SR140X10	2 1	21313K 22313EAKD1	H313X H2313X	SR140X12.5 SR140X10	2 1	33 40	ZF13	60
1315SK 2315SK	H315X H2315X	SR160X14 SR160X10	2 1	21315K 22315EAKD1	H315X H2315X	SR160X14 SR160X10	2 1	36 45	ZF15	65
1316SK 2316SK	H316X H2316X	SR170X14.5 SR170X10	2 1	21316K 22316EAKD1	H316X H2316X	SR170X14.5 SR170X10	2 1	39 48	ZF16	70
1317SK 2317SK	H317X H2317X	SR180X14.5 SR180X10	2 1	21317K 22317EAKD1	H317X H2317X	SR180X14.5 SR180X10	2 1	41 50	ZF17	75
1318SK 2318SK	H318X H2318X	SR190X15.3 SR190X 9.5	2 1	21318K 22318EAKD1	H318X H2318X	SR190X15.3 SR190X 9.5	2 1	42 52	ZF18	80
1319SK 2319SK	H319X H2319X	SR200X15.8 SR200X 9.5	2 1	21319K 22319EAKD1	H319X H2319X	SR200X15.8 SR200X 9.5	2 1	44 55	ZF19	85
1320SK 2320SK	H320X H2320X	SR215X17.8 SR215X 9.5	2 1	21320K 22320EAKD1	H320X H2320X	SR215X17.8 SR215X 9.5	2 1	46 59	ZF20	90
1322SK 2322SK	H322X H2322X	SR240X19.8 SR240X 9.5	2 1	21322K 22322EAKD1	H322X H2322X	SR240X19.8 SR240X 9.5	2 1	48 63	ZF22	100
—	—	—	—	22324EAKD1	H2324X	SR260X 9.5	1	67	ZF24	110
—	—	—	—	22326EAKD1	H2326	SR280X 9.5	1	72	ZF26	115
—	—	—	—	22328EAKD1	H2328	SR300X 9.5	1	77	ZF28	125
—	—	—	—	22330EMKD1	H2330	SR320X 9.5	1	82	ZF30	135
—	—	—	—	22332EMKD1	H2332	SR340X 9.5	1	88	ZF32	140

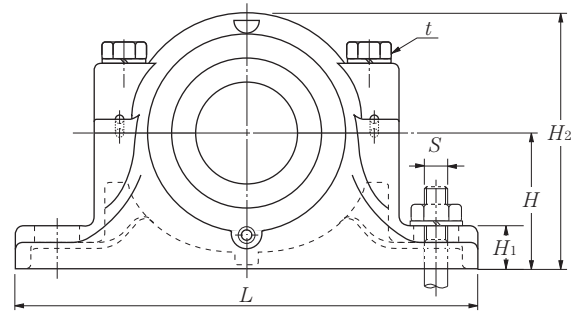
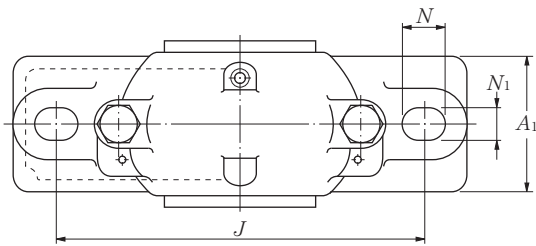
NOTE: 1) Sizes S618 and greater are equipped with lifting eye bolts.

2) Fill and drain plugs size : SN606-SN617.....PT1/8
S618-S632PT1/4

3) Dimension X indicates a deviation of the bearing center relative to the plummer block center, and its value is 1/2 the width of the setting washer.

Plummer Blocks SN30·SN31

Standard type / For bearing with adapter assembly

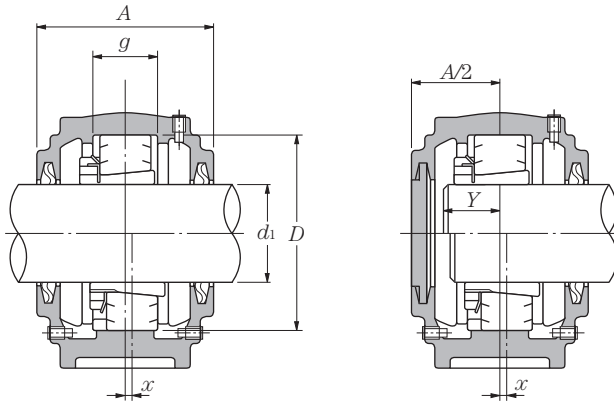


d_1 110~170mm

Shaft dia. mm d_1	Bearing numbers	Abutment and fillet dimensions											Approx. S nominal number	
		D	H	J	N	N_1	A	L	A_1	H_1	H_2	g		t nominal number
110	SN3024	180	112	320	26	32	150	380	110	40	217	56	M20	M24
115	SN3026	200	125	350	26	32	160	410	120	45	240	62	M20	M24
125	SN3028	210	140	350	26	32	170	410	120	45	260	63	M20	M24
135	SN3030	225	150	380	28	36	175	445	130	50	283	66	M24	M24
140	SN3032	240	150	390	28	36	190	460	130	50	290	70	M24	M24
150	SN3034	260	160	450	33	42	200	530	160	60	310	77	M24	M30
160	SN3036	280	170	470	33	42	210	550	160	60	330	84	M24	M30
170	SN3038	290	170	470	33	42	210	550	160	60	335	85	M24	M30

100	SN3122	180	112	320	26	32	155	380	110	40	217	66	M20	M24
110	SN3124	200	125	350	26	32	165	410	120	45	240	72	M20	M24
115	SN3126	210	140	350	26	32	170	410	120	45	260	74	M20	M24
125	SN3128	225	150	380	28	36	180	445	130	50	283	78	M24	M24
135	SN3130	250	150	420	33	42	200	500	150	50	295	90	M24	M30
140	SN3132	270	160	450	33	42	215	530	160	60	315	96	M24	M30
150	SN3134	280	170	470	33	42	220	550	160	60	330	98	M24	M30
160	SN3136	300	180	520	33	42	230	610	170	70	355	106	M30	M30
170	SN3138	320	190	560	33	42	240	650	180	70	375	114	M30	M30

- ① The numeral in nominal number of the setting ring represents the outside diameter and width dimension.
- ② Dimension Y is an approximate distance from the bearing center to the shaft end for shaft end configuration.



Mass kg (approx.)	Nominal number Combination with self-aligning ball bearings			Approx. mm Y ²⁾	Seal number	shaft dia. mm d_1	
	Self-aligning ball bearings	Adapter	Setting washer ¹⁾ Number				
17	23024EAKD1	H3024X	SR180X10	1	47	ZF24	110
20	23026EAKD1	H3026	SR200X10	1	51	ZF26	115
25	23028EAKD1	H3028	SR210X10	1	53	ZF28	125
30	23030EAKD1	H3030	SR225X10	1	56	ZF30	135
33	23032EAKD1	H3032	SR240X10	1	61	ZF32	140
46	23034EAKD1	H3034	SR260X10	1	66	ZF34	150
52	23036EAKD1	H3036	SR280X10	1	70	ZF36	160
52	23038EAKD1	H3038	SR290X10	1	72	ZF38	170

18	23122EAKD1	H3122X	SR180X10	1	51	ZF22	100
21	23124EAKD1	H3124X	SR200X10	1	55	ZF24	110
26	23126EAKD1	H3126	SR210X10	1	57	ZF26	115
32	23128EAKD1	H3128	SR225X10	1	60	ZF28	125
40	23130EAKD1	H3130	SR250X10	1	68	ZF30	135
45	23132EAKD1	H3132	SR270X10	1	74	ZF32	140
51	23134EAKD1	H3134	SR280X10	1	76	ZF34	150
63	23136EAKD1	H3136	SR300X10	1	81	ZF36	160
76	23138EMKD1	H3138	SR320X10	1	86	ZF38	170

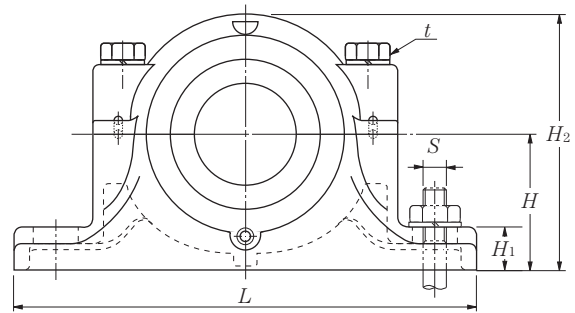
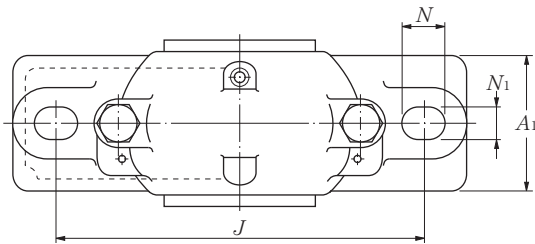
NOTE: 1) Sizes SN3028 and greater and sizes SN3126 and greater are equipped with lifting eye bolts.

2) Fill and drain plugs size : PT1/4

3) Dimension X indicates a deviation of the bearing center relative to the plummer block center, and its value is 1/2 the width of the setting washer.

Plummer Blocks SNZ2

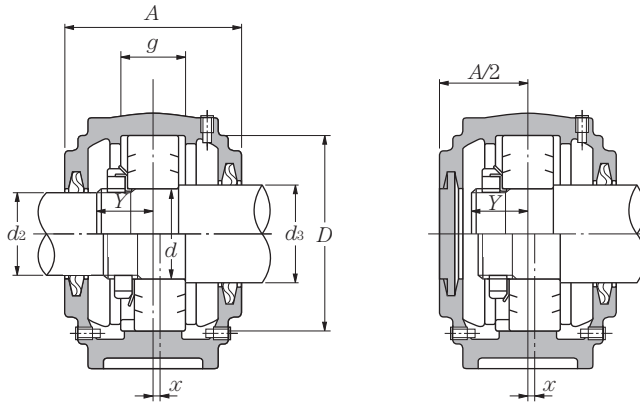
Stepped bore type / For cylindrical bore bearing



d_1 30~160mm

Shaft dia.			Bearing numbers	Abutment and fillet dimensions												Approx.	Mass
mm				mm													
d	d_2	d_3		D	H	J	N	N_1	A	L	A_1	H_1	H_2	g	t nominal number	S nominal number	(approx.)
30	25	35	SNZ206	62	50	150	15	20	77	185	52	22	90	30	M 8	M12	1.8
35	30	45	SNZ207	72	50	150	15	20	82	185	52	22	95	33	M10	M12	2.2
40	35	50	SNZ208	80	60	170	15	20	85	205	60	25	110	33	M10	M12	2.9
45	40	55	SNZ209	85	60	170	15	20	85	205	60	25	112	31	M10	M12	3.2
50	45	60	SNZ210	90	60	170	15	20	90	205	60	25	115	33	M10	M12	3.4
55	50	65	SNZ211	100	70	210	18	23	95	255	70	28	130	33	M12	M16	4.5
60	55	70	SNZ212	110	70	210	18	23	105	255	70	30	135	38	M12	M16	5.4
65	60	75	SNZ213	120	80	230	18	23	110	275	80	30	150	43	M12	M16	6.2
70	60	80	SNZ214	125	80	230	18	23	115	275	80	30	155	44	M12	M16	6.7
75	65	85	SNZ215	130	80	230	18	23	115	280	80	30	155	41	M12	M16	7.6
80	70	90	SNZ216	140	95	260	22	27	120	315	90	32	175	43	M16	M20	9.4
85	75	95	SNZ217	150	95	260	22	27	125	320	90	32	185	46	M16	M20	10
90	80	100	SNZ218	160	100	290	22	27	145	345	100	35	195	62.4	M16	M20	13
95	85	110	SNZ219	170	112	290	22	27	140	345	100	35	210	53	M16	M20	16
100	90	115	SNZ220	180	112	320	26	32	160	380	110	40	218	70.3	M20	M24	18
110	100	125	SNZ222	200	125	350	26	32	175	410	120	45	240	80	M20	M24	23
120	110	135	SNZ224	215	140	350	26	32	185	410	120	45	270	86	M20	M24	25
130	115	145	SNZ226	230	150	380	28	36	190	445	130	50	290	90	M24	M24	32
140	125	155	SNZ228	250	150	420	33	42	205	500	150	50	305	98	M24	M30	41
150	135	165	SNZ230	270	160	450	33	42	220	530	160	60	325	106	M24	M30	49
160	140	175	SNZ232	290	170	470	33	42	235	550	160	60	345	114	M24	M30	57

- ① The numeral in nominal number of the setting ring represents the outside diameter and width dimension.
- ② Dimension Y is an approximate distance from the bearing center to the shaft end for shaft end configuration.



Combination with self-aligning ball bearings		Nominal number Combination with spherical roller bearings				Lock nuts	Lock washers	Approx. mm Y ²⁾	Seal number		shaft dia. mm d
Self-aligning ball bearings	Setting washer ¹⁾ Number	Spherical roller bearings	Setting washer ¹⁾ Number	Lock nuts	Lock washers				(d ₂)	(d ₃)	
1206S 2206S	SR 62X 7 SR 62X10	2 1	—	—	—	AN06	AW06	18 20	ZF 6	ZF 8	30
1207S 2207S	SR 72X 8 SR 72X10	2 1	—	—	—	AN07	AW07	19 22	ZF 7	ZF10	35
1208S 2208S	SR 80X 7.5 SR 80X10	2 1	22208EAD1	SR 80X10	1	AN08	AW08	21 23	ZF 8	ZF11	40
1209S 2209S	SR 85X 6 SR 85X 8	2 1	22209EAD1	SR 85X 8	1	AN09	AW09	22 24	ZF 9	ZF12	45
1210S 2210S	SR 90X 6.5 SR 90X10	2 1	22210EAD1	SR 90X10	1	AN10	AW10	24 25	ZF10	ZF13	50
1211S 2211S	SR100X 6 SR100X 8	2 1	22211EAD1	SR100X 8	1	AN11	AW11	25 27	ZF11	ZF15	55
1212S 2212S	SR110X 8 SR110X10	2 1	22212EAD1	SR110X10	1	AN12	AW12	26 29	ZF12	ZF16	60
1213S 2213S	SR120X10 SR120X12	2 1	22213EAD1	SR120X12	1	AN13	AW13	28 32	ZF13	ZF17	65
1214S 2214S	SR125X10 SR125X13	2 1	22214EAD1	SR125X13	1	AN14	AW14	28 32	ZF13	ZF18	70
1215S 2215S	SR130X 8 SR130X10	2 1	22215EAD1	SR130X10	1	AN15	AW15	30 33	ZF15	ZF19	75
1216S 2216S	SR140X 8.5 SR140X10	2 1	22216EAD1	SR140X10	1	AN16	AW16	32 36	ZF16	ZF20	80
1217S 2217S	SR150X 9 SR150X10	2 1	22217EAD1	SR150X10	1	AN17	AW17	34 38	ZF17	ZF21	85
1218S 2218S	SR160X16.2 SR160X11.2	2 2	22218EAD1 23218EMD1	SR160X11.2 SR160X10	2 1	AN18	AW18	35 40 46	ZF18	ZF22	90
1219S 2219S	SR170X10.5 SR170X10	2 1	22219EAD1	SR170X10	1	AN19	AW19	37 43	ZF19	ZF24	95
1220S 2220S	SR180X18.1 SR180X12.1	2 2	22220EAD1 23220EMD1	SR180X12.1 SR180X10	2 1	AN20	AW20	39 45 52	ZF20	ZF26	100
1222S 2222S	SR200X21 SR200X13.5	2 2	22222EAD1 23222EMD1	SR200X13.5 SR200X10	2 1	AN22	AW22	42 50 58	ZF22	ZF28	110
—	—	—	22224EAD1 23224EMD1	SR215X14 SR215X10	2 1	AN24	AW24	53 62	ZF24	ZF30	120
—	—	—	22226EAD1 23226EMD1	SR230X13 SR230X10	2 1	AN26	AW26	57 65	ZF26	GS33	130
—	—	—	22228EAD1 23228EMD1	SR250X15 SR250X10	2 1	AN28	AW28	60 70	ZF28	GS35	140
—	—	—	22230EAD1 23230EMD1	SR270X16.5 SR270X10	2 1	AN30	AW30	65 76	ZF30	GS37	150
—	—	—	22232EAD1 23232EMD1	SR290X17 SR290X10	2 1	AN32	AW32	71 83	ZF32	GS39	160

NOTE: 1) Sizes SNZ224 and greater are equipped with lifting eye bolts.

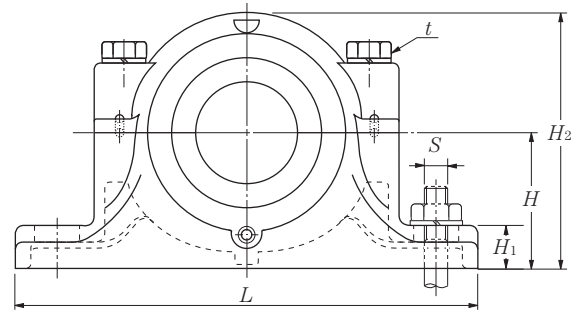
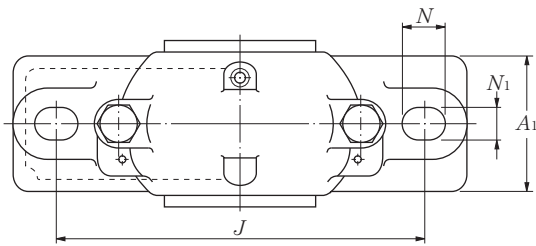
2) Fill and drain plugs size : SNZ206-SNZ220.....PT1/8

SNZ222-SNZ232.....PT1/4

3) Dimension X indicates a deviation of the bearing center relative to the plummer block center, and its value is 1/2 the width of the setting washer.

Plummer Blocks SNZ3·SZ3

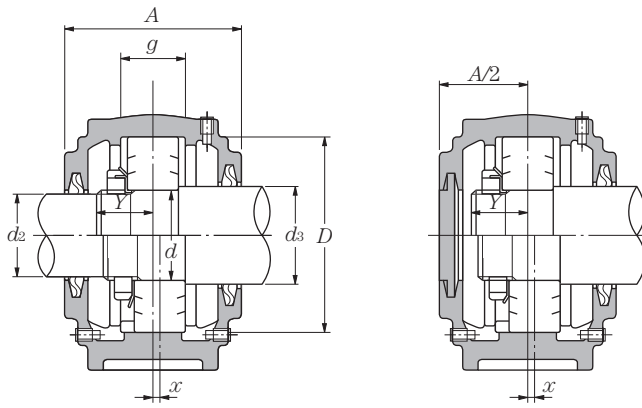
Stepped bore type / For cylindrical bore bearing



d_1 30~160mm

Shaft dia. mm	Bearing numbers	Abutment and fillet dimensions														Approx. S nominal number	Mass kg (approx.)
		d	d_2	d_3	D	H	J	N	N_1	A	L	A_1	H_1	H_2	g		
30	25	35	SNZ306	72	50	150	15	20	82	185	52	22	95	37	M10	M12	2.1
30	25	40	SNZ306X	72	50	150	15	20	82	185	52	22	95	37	M10	M12	2.1
35	30	45	SNZ307	80	60	170	15	20	90	205	60	25	110	41	M10	M12	3.1
40	35	50	SNZ308	90	60	170	15	20	95	205	60	25	115	43	M10	M12	3.5
45	40	55	SNZ309	100	70	210	18	23	105	255	70	28	130	46	M12	M16	4.8
50	45	60	SNZ310	110	70	210	18	23	115	255	70	30	135	50	M12	M16	5.6
55	50	65	SNZ311	120	80	230	18	23	120	275	80	30	150	53	M12	M16	6.6
60	55	70	SNZ312	130	80	230	18	23	125	280	80	30	155	56	M12	M16	7.9
65	60	75	SNZ313	140	95	260	22	27	130	315	90	32	175	58	M16	M20	11
70	60	80	SNZ314	150	95	260	22	27	130	320	90	32	185	61	M16	M20	12
75	65	85	SNZ315	160	100	290	22	27	140	345	100	35	195	65	M16	M20	13
80	70	90	SNZ316	170	112	290	22	27	145	345	100	35	212	68	M16	M20	16
85	75	95	SNZ317	180	112	320	26	32	155	380	110	40	218	70	M20	M24	18
85	75	100	SNZ317X	180	112	320	26	32	155	380	110	40	218	70	M20	M24	18
90	80	100	SZ318	190	112	320	26	35	160	400	110	33	230	74	M20	M24	21
90	80	105	SZ318X	190	112	320	26	35	160	400	110	33	230	74	M20	M24	21
95	85	110	SZ319	200	125	350	26	35	170	420	120	36	245	77	M20	M24	23
100	90	115	SZ320	215	140	350	26	35	175	420	120	38	280	83	M20	M24	32
110	100	125	SZ322	240	150	390	28	38	190	460	130	40	300	90	M24	M24	42
120	110	135	SZ324	260	160	450	33	42	205	540	160	50	325	96	M24	M30	61
130	115	150	SZ326	280	170	470	33	42	215	560	160	50	350	103	M24	M30	68
140	125	160	SZ328	300	180	520	35	45	235	630	170	55	375	112	M30	M30	95
150	135	170	SZ330	320	190	560	35	45	245	680	180	55	395	118	M30	M30	110
160	140	180	SZ332	340	200	580	42	52	255	710	190	60	415	124	M30	M36	130

① The numeral in nominal number of the setting ring represents the outside diameter and width dimension.
 ② Dimension Y is an approximate distance from the bearing center to the shaft end for shaft end configuration.



Combination with self-aligning ball bearings			Nominal number				Approx. mm	Seal number		shaft dia. mm	
Self-aligning ball bearings	Setting washer ①	Number	Spherical roller bearings	Setting washer ①	Number	Lock nuts		Lock washers	Y ②		(d ₂)
1306S 2306S	SR 72X 9 SR 72X10	2 1	—	—	—	AN06	AW06	19 23	ZF 6	ZF 8	30
1306S 2306S	SR 72X 9 SR 72X10	2 1	—	—	—	AN06	AW06	19 23	ZF 6	ZF 9	30
1307S 2307S	SR 80X10 SR 80X10	2 1	—	—	—	AN07	AW07	21 26	ZF 7	ZF10	35
1308S 2308S	SR 90X10 SR 90X10	2 1	21308C 22308EAD1	SR 90X10 SR 90X10	2 1	AN08	AW08	23 28	ZF 8	ZF11	40
1309S 2309S	SR100X10.5 SR100X10	2 1	21309C 22309EAD1	SR100X10.5 SR100X10	2 1	AN09	AW09	25 31	ZF 9	ZF12	45
1310S 2310S	SR110X11.5 SR110X10	2 1	21310C 22310EAD1	SR110X11.5 SR110X10	2 1	AN10	AW10	27 34	ZF10	ZF13	50
1311S 2311S	SR120X12 SR120X10	2 1	21311 22311EAD1	SR120X12 SR120X10	2 1	AN11	AW11	29 36	ZF11	ZF15	55
1312S 2312S	SR130X12.5 SR130X10	2 1	21312 22312EAD1	SR130X12.5 SR130X10	2 1	AN12	AW12	31 39	ZF12	ZF16	60
1313S 2313S	SR140X12.5 SR140X10	2 1	21313 22313EAD1	SR140X12.5 SR140X10	2 1	AN13	AW13	33 40	ZF13	ZF17	65
1314S 2314S	SR150X13 SR150X10	2 1	21314 22314EAD1	SR150X13 SR150X10	2 1	AN14	AW14	34 42	ZF13	ZF18	70
1315S 2315S	SR160X14 SR160X10	2 1	21315 22315EAD1	SR160X14 SR160X10	2 1	AN15	AW15	36 45	ZF15	ZF19	75
1316S 2316S	SR170X14.5 SR170X10	2 1	21316 22316EAD1	SR170X14.5 SR170X10	2 1	AN16	AW16	39 48	ZF16	ZF20	80
1317S 2317S	SR180X14.5 SR180X10	2 1	21317 22317EAD1	SR180X14.5 SR180X10	2 1	AN17	AW17	41 50	ZF17	ZF21	85
1317S 2317S	SR180X14.5 SR180X10	2 1	21317 22317EAD1	SR180X14.5 SR180X10	2 1	AN17	AW17	41 50	ZF17	ZF22	85
1318S 2318S	SR190X15.3 SR190X 9.5	2 1	21318 22318EAD1	SR190X15.3 SR190X 9.5	2 1	AN18	AW18	42 52	ZF18	ZF22	90
1318S 2318S	SR190X15.3 SR190X 9.5	2 1	21318 22318EAD1	SR190X15.3 SR190X 9.5	2 1	AN18	AW18	42 52	ZF18	ZF23	90
1319S 2319S	SR200X15.8 SR200X 9.5	2 1	21319 22319EAD1	SR200X15.8 SR200X 9.5	2 1	AN19	AW19	44 55	ZF19	ZF24	95
1320S 2320S	SR215X17.8 SR215X 9.5	2 1	21320 22320EAD1	SR215X17.8 SR215X 9.5	2 1	AN20	AW20	46 59	ZF20	ZF26	100
1322S 2322S	SR240X19.8 SR240X 9.5	2 1	21322 22322EAD1	SR240X19.8 SR240X 9.5	2 1	AN22	AW22	48 63	ZF22	ZF28	110
—	—	—	22324EAD1	SR260X 9.5	1	AN24	AW24	67	ZF24	ZF30	120
—	—	—	22326EAD1	SR280X 9.5	1	AN26	AW26	72	ZF26	ZF34	130
—	—	—	22328EAD1	SR300X 9.5	1	AN28	AW28	77	ZF28	ZF36	140
—	—	—	22330EMD1	SR320X 9.5	1	AN30	AW30	82	ZF30	ZF38	150
—	—	—	22332EMD1	SR340X 9.5	1	AN32	AW32	88	ZF32	ZF40	160

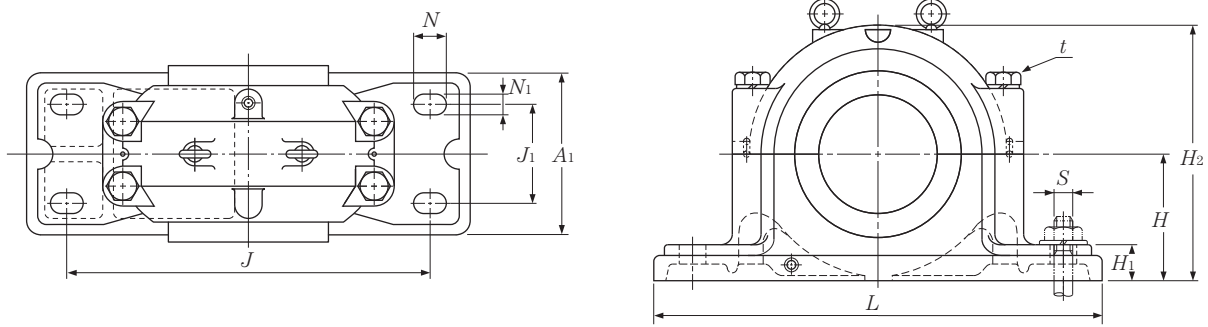
NOTE: 1) Sizes SZ318 and greater are equipped with lifting eye bolts.

2) Fill and drain plugs size : SNZ306-SNZ317.....PT1/8
SZ318-SZ332.....PT1/4

3) Dimension X indicates a deviation of the bearing center relative to the plummer block center, and its value is 1/2 the width of the setting washer.

Plummer Blocks SD5·SD5G·SD6·SD6G

For heavy load, double rubber sealed type / For bearing with adapter assembly

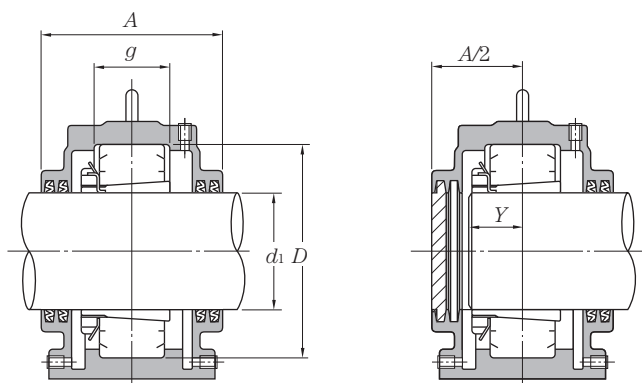


d_1 150~300mm

Shaft dia. mm d_1	Bearing numbers		Abutment and fillet dimensions													Approx. S nominal number
	free side	fixed side	mm													
			D	H	J	J_1	N	N_1	A	L	A_1	H_1	H_2	g ①	t nominal number	
150	SD534	SD534G	310	180	510	140	32	52	270	620	230	60	360	96	M24	M30
160	SD536	SD536G	320	190	540	150	32	52	280	650	240	60	380	96	M24	M30
170	SD538	SD538G	340	200	570	160	35	55	290	700	260	65	400	102	M30	M30
180	SD540	SD540G	360	210	610	170	35	55	300	740	270	65	420	108	M30	M30
200	SD544	SD544G	400	240	680	190	40	60	330	820	300	70	475	118	M30	M36
220	SD548	SD548G	440	260	740	200	42	62	340	880	310	85	515	130	M36	M36
240	SD552	SD552G	480	280	790	210	42	62	370	940	340	85	560	140	M36	M36
260	SD556	SD556G	500	300	830	230	50	70	390	990	370	100	590	140	M36	M42
280	SD560	SD560G	540	325	890	250	50	70	410	1060	390	100	640	150	M36	M42
300	SD564	SD564G	580	355	930	270	57	77	440	1110	420	110	690	160	M42	M48

150	SD634	SD634G	360	210	610	170	35	55	300	740	270	65	420	130	M30	M30
160	SD636	SD636G	380	225	640	180	40	60	320	780	290	70	450	136	M30	M36
170	SD638	SD638G	400	240	680	190	40	60	330	820	300	70	475	142	M30	M36
180	SD640	SD640G	420	250	710	200	42	62	350	860	320	85	500	148	M36	M36
200	SD644	SD644G	460	280	770	210	42	62	360	920	330	85	550	155	M36	M36
220	SD648	SD648G	500	300	830	230	50	70	390	990	370	100	590	165	M36	M42
240	SD652	SD652G	540	325	890	250	50	70	410	1 060	390	100	640	175	M36	M42
260	SD656	SD656G	580	355	930	270	57	77	440	1 110	420	110	690	185	M42	M48

① Dimension g represents the bearing seat width for free-side bearing. Dimension for fixed-side (code G) is 0.5 mm greater than the bearing width dimension.
 ② Dimension Y is an approximate distance from the bearing center to the shaft end for shaft end configuration.



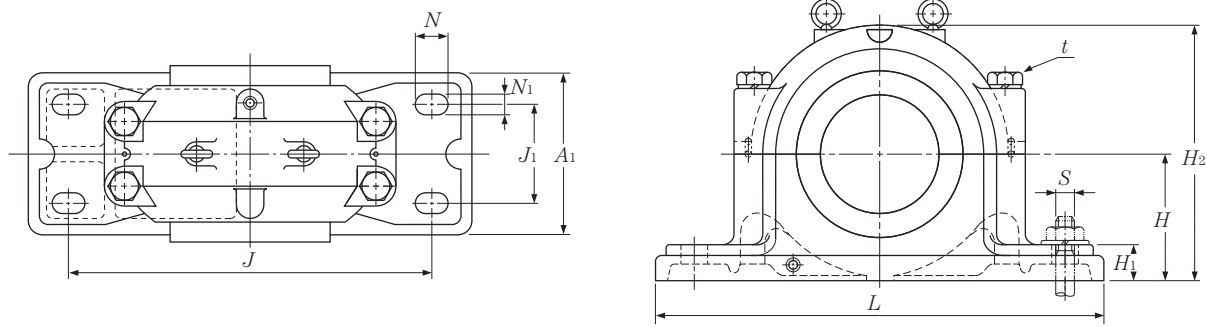
Mass kg (approx.)	Nominal number Combination with spherical roller bearings		Approx. mm Y ②	Seal number	shaft dia. mm d_1
	Spherical roller bearings	Adapter			
95	22234EMKD1	H3134	75	ZF34	150
110	22236EMKD1	H3136	76	ZF36	160
130	22238EMKD1	H3138	80	ZF38	170
150	22240EMKD1	H3140	84	ZF40	180
210	22244EMKD1	H3144	90	ZF44	200
240	22248EMKD1	H3148	98	ZF48	220
320	22252EMKD1	H3152	105	ZF52	240
370	22256EMKD1	H3156	107	ZF56	260
460	22260EMKD1	H3160	114	ZF60	280
560	22264EMKD1	H3164	122	ZF64	300

150	22334EMKD1	H2334	92	ZF34	150
180	22336EMKD1	H2336	96	ZF36	160
210	22338EMKD1	H2338	100	ZF38	170
240	22340EMKD1	H2340	104	ZF40	180
300	22344EMKD1	H2344	109	ZF44	200
370	22348EMKD1	H2348	116	ZF48	220
460	22352EMKD1	H2352	123	ZF52	240
560	22356EMKD1	H2356	130	ZF56	260

NOTE: Fill and drain plugs size : PT3/8

Plummer Blocks SD30·SD30G

For heavy load, double rubber sealed type / For bearing with adapter assembly



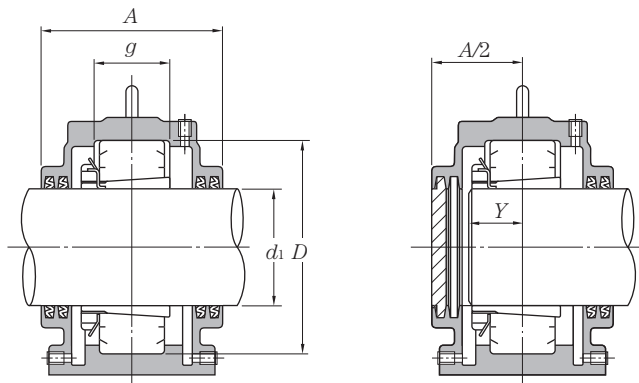
d_1 150~450mm

Shaft dia. mm d_1	Bearing numbers ①		Abutment and fillet dimensions													Approx. S nominal number
	free side	fixed side	mm													
			D	H	J	J_1	N	N_1	A	L	A_1	H_1	H_2	g ②	t nominal number	
150	SD3034	SD3034G	260	160	450	110	32	42	230	540	200	50	320	77	M24	M30
160	SD3036	SD3036G	280	170	470	120	32	42	250	560	220	50	340	84	M24	M30
170	SD3038	SD3038G	290	170	470	120	32	42	250	560	220	50	345	85	M24	M30
180	SD3040	SD3040G	310	180	510	140	32	52	270	620	250	60	360	92	M24	M30
200	SD3044	SD3044G	340	200	570	160	35	55	290	700	280	65	400	100	M30	M30
220	SD3048	SD3048G	360	210	610	170	35	55	300	740	290	65	420	102	M30	M30
240	SD3052	SD3052G	400	240	680	190	40	60	340	820	320	70	475	114	M30	M36
260	SD3056	SD3056G	420	250	710	200	42	62	350	860	340	85	500	116	M36	M36
280	SD3060	SD3060G	460	280	770	210	42	62	360	920	350	85	550	128	M36	M36
300	SD3064	SD3064G	480	280	790	210	42	62	380	940	360	85	560	131	M36	M36
380	SD3080	SD3080G	600	365	960	270	57	77	430	1 140	420	120	710	158	M42	M48
400	SD3084	SD3084G	620	375	980	270	57	77	430	1 160	420	120	735	160	M42	M48
410	SD3088	SD3088G	650	390	1 040	280	57	77	460	1 220	450	125	765	167	M42	M48
430	SD3092	SD3092G	680	405	1 040	310	57	77	470	1 220	460	130	790	173	M42	M48
450	SD3096	SD3096G	700	415	1 100	320	57	77	485	1 280	470	130	820	175	M42	M48

① SD3068, SD3072 and SD3076 are respectively identical to SD3368, SD3372 and SD3376 in terms of dimensions. For this reason, specify "SD3368," "SD3372" or "SD3376" when ordering SD3068, SD3072 or SD3076.

② Dimension g represents the bearing seat width for free-side bearing. Dimension for fixed-side (code G) is 0.5 mm greater than the bearing width dimension.

③ Dimension Y is an approximate distance from the bearing center to the shaft end for shaft end configuration.

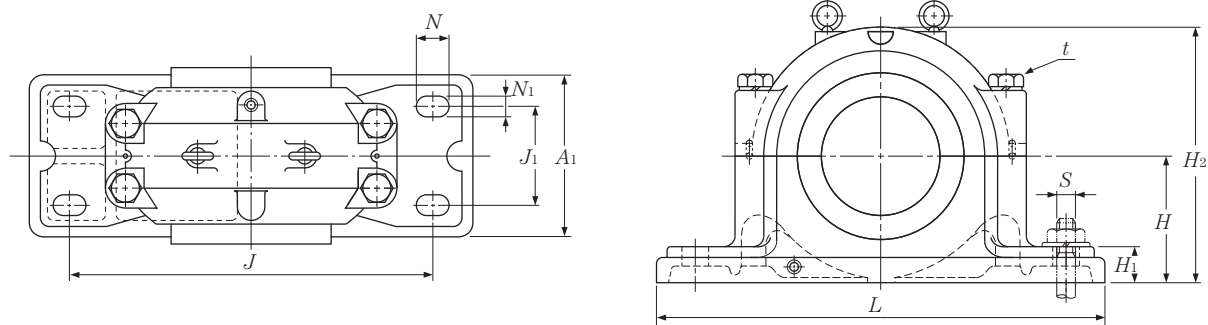


Mass kg (approx.)	Nominal number Combination with spherical roller bearings		Approx. mm Y ^②	Seal number	shaft dia. mm d ₁
	Spherical roller bearings	Adapter			
70	23034EAKD1	H3034	66	ZF34	150
80	23036EAKD1	H3036	70	ZF36	160
85	23038EAKD1	H3038	72	ZF38	170
100	23040EMKD1	H3040	76	ZF40	180
130	23044EMKD1	H3044	79	ZF44	200
150	23048EMKD1	H3048	84	ZF48	220
210	23052EMKD1	H3052	90	ZF52	240
240	23056EMKD1	H3056	95	ZF56	260
300	23060EMKD1	H3060	105	ZF60	280
320	23064EMKD1	H3064	108	ZF64	300
620	23080BK	H3080	131	GS80	380
690	23084BK	H3084	132	GS84	400
800	23088BK	H3088	144	GS88	410
870	23092BK	H3092	147	GS92	430
980	23096BK	H3096	148	GS96	450

NOTE: Fill and drain plugs size : PT3/8

Plummer Blocks SD31·SD31G

For heavy load, double sealed type / For bearing with adapter assembly



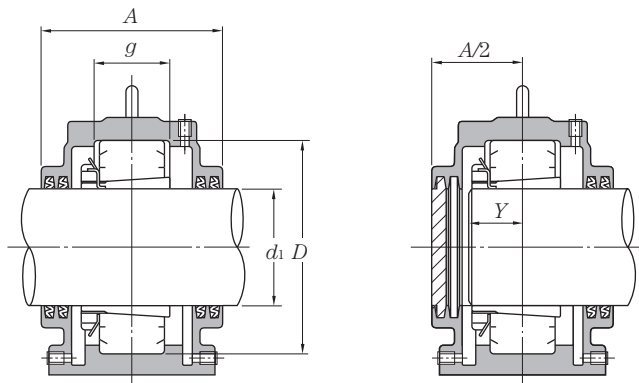
d_1 150~400mm

Shaft dia. mm d_1	Bearing numbers ①		Abutment and fillet dimensions													Approx. S nominal number
	free side	fixed side	mm													
			D	H	J	J_1	N	N_1	A	L	A_1	H_1	H_2	g ②	t nominal number	
150	SD3134	SD3134G	280	170	470	120	35	42	250	560	220	50	340	98	M24	M30
160	SD3136	SD3136G	300	180	520	140	35	52	270	630	250	55	365	106	M30	M30
170	SD3138	SD3138G	320	190	560	140	35	55	310	680	270	55	385	114	M30	M30
180	SD3140	SD3140G	340	200	570	160	35	55	310	700	280	65	400	122	M30	M30
200	SD3144	SD3144G	370	225	640	180	40	60	320	780	310	70	450	130	M30	M36
220	SD3148	SD3148G	400	240	680	190	40	60	330	820	320	70	475	138	M30	M36
240	SD3152	SD3152G	440	260	740	200	42	62	360	880	350	85	515	154	M36	M36
260	SD3156	SD3156G	460	280	770	210	42	62	360	920	350	85	550	156	M36	M36
280	SD3160	SD3160G	500	300	830	230	50	70	390	990	380	100	590	170	M36	M42
300	SD3164	SD3164G	540	325	890	250	50	70	430	1 060	400	100	640	186	M36	M42
340	SD3172	SD3172G	600	365	960	310	57	77	470	1 140	460	120	710	202	M42	M48
360	SD3176	SD3176G	620	375	980	320	57	77	500	1 160	490	120	735	204	M42	M48
380	SD3180	SD3180G	650	390	1 040	340	57	77	520	1 220	510	125	765	210	M42	M48
400	SD3184	SD3184G	700	420	1 070	380	57	77	560	1 250	550	135	820	234	M42	M48

① SD3168 is identical to SD3468 in terms of dimensions. For this reason, specify "SD3468" when ordering SD3168.

② Dimension g represents the bearing seat width for free-side bearing. Dimension for fixed-side (code G) is 0.5 mm greater than the bearing width dimension.

③ Dimension Y is an approximate distance from the bearing center to the shaft end for shaft end configuration.

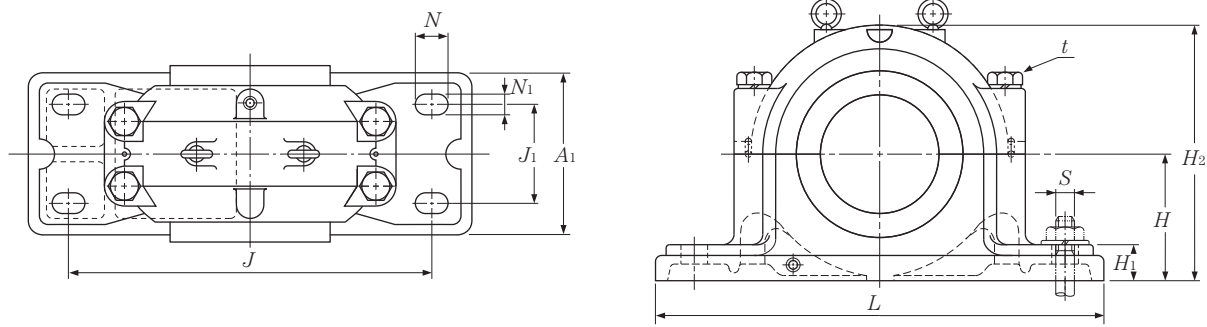


Mass kg (approx.)	Nominal number Combination with spherical roller bearings		Approx. mm Y ③	Seal number	shaft dia. mm d_1
	Spherical roller bearings	Adapter			
75	23134EAKD1	H3134	76	ZF34	150
94	23136EAKD1	H3136	81	ZF36	160
110	23138EMKD1	H3138	86	ZF38	170
130	23140EMKD1	H3140	91	ZF40	180
180	23144EMKD1	H3144	96	ZF44	200
210	23148EMKD1	H3148	102	ZF48	220
240	23152EMKD1	H3152	112	ZF52	240
310	23156EMKD1	H3156	115	ZF56	260
400	23160EMKD1	H3160	124	ZF60	280
480	23164EMKD1	H3164	135	ZF64	300
630	23172BK	H3172	159	GS72	340
850	23176BK	H3176	162	GS76	360
960	23180BK	H3180	167	GS80	380
1 080	23184BK	H3184	187	GS84	400

NOTE: Fill and drain plugs size : PT3/8

Plummer Blocks SD2·SD2G·SD3·SD3G

Heavy load, stepped bore type / For cylindrical bore bearing

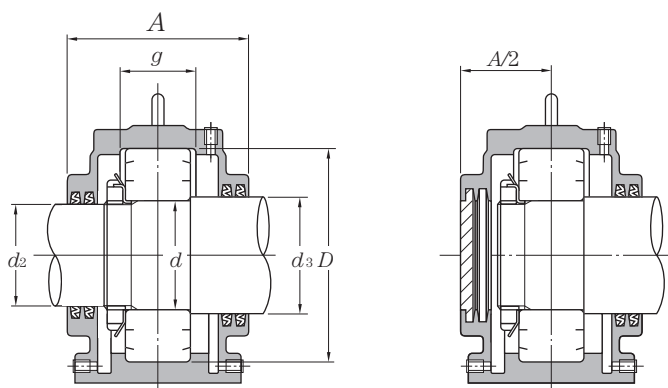


d_1 170~320mm

Shaft dia. mm			Bearing numbers		Abutment and fillet dimensions													Approx.
d	d_2	d_3	free side	fixed side	mm													S nominal number
					D	H	J	J_1	N	N_1	A	L	A_1	H_1	H_2	g ①	t nominal number	
170	160	190	SD234	SD234G	310	180	510	140	32	52	270	620	230	60	360	96	M24	M30
180	170	200	SD236	SD236G	320	190	540	150	32	52	280	650	240	60	380	96	M24	M30
190	180	210	SD238	SD238G	340	200	570	160	35	55	290	700	260	65	400	102	M30	M30
200	190	220	SD240	SD240G	360	210	610	170	35	55	300	740	270	65	420	108	M30	M30
220	210	240	SD244	SD244G	400	240	680	190	40	60	330	820	300	70	475	118	M30	M36
240	230	260	SD248	SD248G	440	260	740	200	42	62	340	880	310	85	515	130	M36	M36
260	250	280	SD252	SD252G	480	280	790	210	42	62	370	940	340	85	560	140	M36	M36
280	260	300	SD256	SD256G	500	300	830	230	50	70	390	990	370	100	590	140	M36	M42
300	280	320	SD260	SD260G	540	325	890	250	50	70	410	1 060	390	100	640	150	M36	M42
320	300	340	SD264	SD264G	580	355	930	270	57	77	440	1 110	420	110	690	160	M42	M48

170	160	190	SD334	SD334G	360	210	610	170	35	55	300	740	270	65	420	130	M30	M30
180	170	200	SD336	SD336G	380	225	640	180	40	60	320	780	290	70	450	136	M30	M36
190	180	210	SD338	SD338G	400	240	680	190	40	60	330	820	300	70	475	142	M30	M36
200	190	220	SD340	SD340G	420	250	710	200	42	62	350	860	320	85	500	148	M36	M36
220	210	240	SD344	SD344G	460	280	770	210	42	62	360	920	330	85	550	155	M36	M36
240	230	260	SD348	SD348G	500	300	830	230	50	70	390	990	370	100	590	165	M36	M42
260	250	280	SD352	SD352G	540	325	890	250	50	70	410	1 060	390	100	640	175	M36	M42
280	260	300	SD356	SD356G	580	355	930	270	57	77	440	1 110	420	110	690	185	M42	M48

- ① Dimension g represents the bearing seat width for free-side bearing. Dimension for fixed-side (code G) is 0.5 mm greater than the bearing width dimension.
 ② Dimension Y is an approximate distance from the bearing center to the shaft end for shaft end configuration.



Mass kg (approx.)	Nominal number			Approx. mm $Y \text{ } \textcircled{2}$	Seal number		shaft dia. mm d
	Combination with spherical roller bearings Spherical roller bearings	Lock nuts	Lockwashers Lockplate		(d_2)	(d_3)	
95	22234EMD1	AN34	AW34	75	ZF36	ZF42	170
110	22236EMD1	AN36	AW36	76	ZF38	ZF44	180
130	22238EMD1	AN38	AW38	80	ZF40	ZF46	190
150	22240EMD1	AN40	AW40	84	ZF42	ZF48	200
210	22244EMD1	AN44	AL44	90	ZF46	ZF52	220
240	22248EMD1	AN48	AL44	98	GS50S	ZF56	240
320	22252EMD1	AN52	AL52	105	ZF54	ZF60	260
370	22256EMD1	AN56	AL52	107	ZF56	ZF64	280
460	22260EMD1	AN60	AL60	114	ZF60	ZF68	300
560	22264EMD1	AN64	AL64	122	ZF64	GS72	320

150	22334EMD1	AN34	AW34	92	ZF36	ZF42	170
180	22336EMD1	AN36	AW36	96	ZF38	ZF44	180
210	22338EMD1	AN38	AW38	100	ZF40	ZF46	190
240	22340EMD1	AN40	AW40	104	ZF42	ZF48	200
300	22344EMD1	AN44	AL44	109	ZF46	ZF52	220
370	22348EMD1	AN48	AL44	116	GS50S	ZF56	240
460	22352EMD1	AN52	AL52	123	ZF54	ZF60	260
560	22356EMD1	AN56	AL52	130	ZF56	ZF64	280

NOTE: Fill and drain plugs size : PT3/8