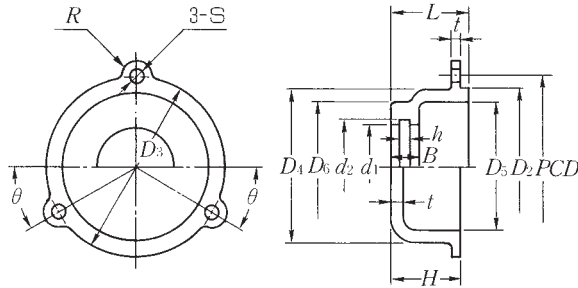


Cast iron cover



Use bolt

Cover designation	C CM CK	Bolt size
204~211		M 5×12
212~218 305~309		M 6×15
310~322		M 8×20
324~328		M10×25

Units : mm

C- CM-	D <sub>2</sub>	D <sub>3</sub>	D <sub>4</sub>	D <sub>5</sub>	D <sub>6</sub>	d <sub>1</sub>	d <sub>2</sub>	PCD	R	S	t	H	L	h	B	θ
204	52	56	46	38	42	28.9	35	60	6	5.8	4	19.5	20.5	3.9	9.9	20
205	57	65	51	43	47	33.9	40.5	65	6	5.8	4	22	24	3.9	11.9	20
206	67	75	61	53	54	38.2	45.5	75	6	5.8	4	22.5	24.5	3.9	11.9	20
207	78	82	72	64	61	43.8	52	86	7	5.8	4	24	26	4.1	12.1	20
208	86	92	80	70	67	49.5	57	95	7	5.8	5	27.5	29.5	4.1	12.1	20
209	92	98	87	77	74	55.7	64	101	7	5.8	5	29	32	5	13	30
210	97	106	92	82	80	60	69	106	7	5.8	5	30	33	5	13	30
211	107	114	103	93	87	67.4	76	117	7	5.8	5	29.5	32.5	5.5	15.5	30
212	118	125	113	103	92	72	81	128	8	7	5	35	38	5.5	15.5	30
213	128	134	123	113	99	77	88	138	8	7	5	36.5	39.5	6.7	16.7	30
214	133	142	128	116	106	82.7	93.5	144	9	7	6	43	46	6.7	16.7	30
215	138	148	134	122	115	91	102.5	150	9	7	6	42	45	7.5	17.5	30
216	149	158	144	132	120	94.8	107.5	162	9	7	6	45.5	48.5	7.5	17.5	30
217	159	164	152	140	126	100.3	113.5	170	9	7	6	49	52	8.3	20.3	30
218	169	176	164	152	131	105.3	118.5	182	9	7	6	52.5	55.5	8.3	20.3	30

Units : mm

C- CM-	D <sub>2</sub>	D <sub>3</sub>	D <sub>4</sub>	D <sub>5</sub>	D <sub>6</sub>	d <sub>1</sub>	d <sub>2</sub>	PCD	R	S	t	H	L	h	B	θ
305	67	75	62	52	51	33.9	40.5	76	6.5	7	5	26	28	3.9	11.9	30
306	78	85	75	65	56	38.2	45.5	92	8	7	5	27.5	29.5	3.9	11.9	30
307	87	95	82	72	62	43.8	52	100	8	7	5	30.5	33	4.1	12.1	30
308	97	106	92	80	69	49.5	57	112	8	7	6	34.5	37	4.1	12.1	30
309	107	119	104	92	76	55.7	64	124	9	7	6	35	37.5	5	13	30
310	120	134	110	98	81	60	69	136	11	10	6	38.5	41	5	13	30
311	130	142	120	108	88	67.4	76	146	11	10	6	39	42	5.5	15.5	30
312	140	152	132	120	93	72	81	160	12	10	6	43	46	5.5	15.5	30
313	150	166	142	130	101	77	88	168	14	10	6	43.5	46.5	6.7	16.7	30
314	160	175	152	140	106	82.7	93.5	178	14	10	6	42.5	45.5	6.7	16.7	30
315	170	186	164	152	115	91	102.5	189	13.5	10	6	46	49	7.5	17.5	30
316	182	200	174	160	122	94.8	107.5	200	13	10	7	46	49	7.5	17.5	30
317	192	208	184	168	130	100.3	113.5	211	14.5	10	8	51.5	54.5	8.3	20.3	30
318	204	220	196	180	135	105.3	118.5	221	14.5	10	8	50.5	54.5	8.3	20.3	30
319	213	230	204	188	142	111.9	125.5	232	14	10	8	52.5	57.5	8.5	20.5	30
320	230	248	220	202	149	118.5	130.5	248	16	10	9	56	61	8.5	20.5	30
321	240	260	235	217	158	125	139.5	262	16	10	9	58.5	63.5	9.5	21.5	30
322	256	276	243	225	163	130	144.5	280	20	10	9	58.5	63.5	9.5	21.5	30
324	274	303	265	245	177	141	156.5	300	22	12	10	61	67	10	22	30
326	314	330	305	285	193	156.2	173	338	22	12	10	61	67	11	25	30
328	339	370	330	310	205	167.6	185	364	22	12	10	66	72	12	26	30

## Cover for UK type bearing

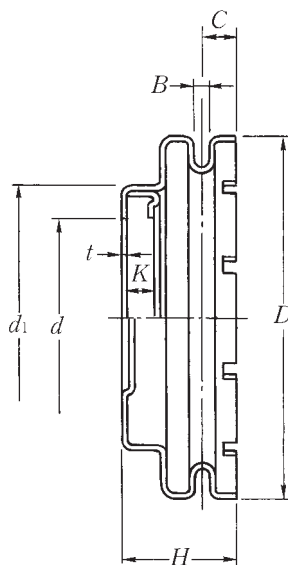
Units : mm

CK-	$D_2$	$D_3$	$D_4$	$D_5$	$D_6$	$d_1$	$d_2$	$PCD$	$R$	$S$	$t$	$H$	$L$	$h$	$B$	$\theta$
205	57	65	51	43	47	28.9	35	65	6	5.8	4	22	24	3.9	11.9	20
206	67	75	61	53	54	34.1	40.5	75	6	5.8	4	22.5	24.5	3.9	11.9	20
207	78	82	72	64	61	38.2	45.5	86	7	5.8	4	24	26	3.9	12.1	20
208	86	92	81	70	67	43.8	52	95	7	5.8	5	27.5	29.5	4.1	12.1	20
209	92	98	87	77	74	49.5	57	101	7	5.8	5	29	32	4.1	13	30
210	97	106	92	82	80	55.7	64	106	7	5.8	5	30	33	5	13	30
211	107	114	103	93	87	60	69	117	7	5.8	5	29.5	32.5	5	15.5	30
212	118	125	113	103	92	67.4	76	128	8	7	5	35	38	5.5	15.5	30
213	128	134	123	113	99	72	81	138	8	7	5	36.5	39.5	5.5	16.7	30
215	138	148	134	122	115	77.7	88	150	9	7	6	42	45	6.7	17.5	30
216	149	158	144	132	120	82.7	93.5	162	9	7	6	45.5	48.5	6.7	17.5	30
217	159	164	152	140	126	88	102.5	170	9	7	6	49	52	7.5	20.3	30
218	169	176	164	152	131	94.8	107.5	182	9	7	6	52.5	55.5	7.5	20.3	30

Units : mm

CK-	$D_2$	$D_3$	$D_4$	$D_5$	$D_6$	$d_1$	$d_2$	$PCD$	$R$	$S$	$t$	$H$	$L$	$h$	$B$	$\theta$
305	67	75	62	52	51	28.9	35	76	6.5	7	5	26	28	3.9	11.9	30
306	78	85	75	65	56	34.1	40.5	92	8	7	5	27.5	29.5	3.9	11.9	30
307	87	95	82	72	62	38.2	45.5	100	8	7	5	30.5	33	3.9	12.1	30
308	97	106	92	80	69	43.8	52	112	8	7	6	34.5	37	4.1	12.1	30
309	107	119	104	92	76	49.5	57	124	9	7	6	35	37.5	4.1	13	30
310	120	134	110	98	81	55.7	64	136	11	10	6	38.5	41	5	13	30
311	130	142	120	108	88	60	69	146	11	10	6	39	42	5	15.5	30
312	140	152	132	120	93	67.4	76	160	12	10	6	43	46	5.5	15.5	30
313	150	166	142	130	101	72	81	168	14	10	6	43.5	46.5	5.5	16.7	30
315	170	186	164	152	115	77.7	88	189	13.5	10	6	46	49	6.7	17.5	30
316	182	200	174	160	122	82.7	93.5	200	13	10	7	46	49	6.7	17.5	30
317	192	208	184	168	130	88	102.5	211	14.5	10	8	51.5	54.5	7.5	20.3	30
318	204	220	196	180	135	94.8	107.5	221	14.5	10	8	50.5	54.5	7.5	20.3	30
319	213	230	204	188	142	100.3	113.5	232	14	10	8	52.5	57.5	8.3	20.5	30
320	230	248	220	202	149	105.3	118.5	248	16	10	9	56	61	8.3	20.5	30
322	256	276	243	225	163	118.5	130.5	280	20	10	9	58.5	63.5	8.5	21.5	30
324	274	303	265	245	177	130	144.5	300	22	12	10	61	67	9.5	22	30
326	314	330	305	285	193	136.2	152	338	22	12	10	61	67	10	25	30
328	339	370	330	310	205	151.2	168	364	22	12	10	66	72	11	26	30

## Pressed steel cover



Units : mm

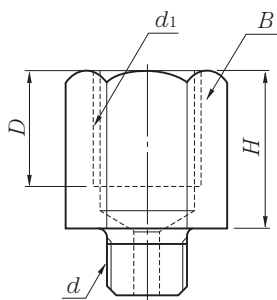
S-SM-	$d$	$d_1$	$D$	$B$	$C$	$K$	$t$	$H$
204	26.7	37.5	53.15	2	5.5	4	0.8	17.5
205	32.1	43.0	59.15	2	7.1	4	0.8	20.8
206	36.5	48.2	70	2	8.2	4	0.8	22.3
207	42.6	55.4	80.2	2	8	4.2	1.0	26.2
208	47.6	60.4	88.2	2	8.5	4.2	1.0	30.2
209	53.6	67.6	94.2	3	9.3	5.2	1.0	30.2
210	58.6	72.6	100.2	3	10.3	5.2	1.0	32.2
211	64.5	80.5	110.25	3	10	5.6	1.2	33.7
212	69.8	85.7	121.25	3	10	5.6	1.2	37.2
213	75	92.75	131.25	3	10.5	6.8	1.2	38.7

Note) "S-204" and "SM-204" do not have the outside slot.

## Cover for UK type bearing

Units : mm

SK-	$d$	$d_1$	$D$	$B$	$C$	$K$	$t$	$H$
205	26.7	37.5	59.15	2	7.1	4	0.8	20.8
206	32.1	43.0	70	2	8.2	4	0.8	22.3
207	36.5	48.2	80.2	2	8	4	1.0	26.2
208	42.6	55.4	88.2	2	8.5	4.2	1.0	30.2
209	47.6	60.4	94.2	3	9.3	4.2	1.0	30.2
210	53.6	67.6	100.2	3	10.3	5.2	1.0	32.2
211	58.6	72.6	110.25	3	10	5.2	1.2	33.7
212	64.5	80.5	121.25	3	10	5.6	1.2	37.2
213	69.8	85.7	131.25	3	10.5	5.6	1.2	38.7

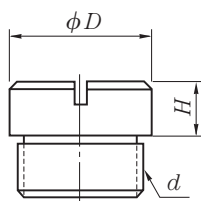


**Designation and dimension for joint**

Units : mm

Designation	External thread $d$	Internal thread $d_1$	$H$	$D$	Dimension across flats $B$
YG# $\frac{1}{4}$ -28UNF $\times$ PT $\frac{1}{8}$	$\frac{1}{4}$ -28UNF	PT $\frac{1}{8}$	15	11	12
YG# $\frac{1}{4}$ -28UNF $\times$ PT $\frac{1}{4}$		PT $\frac{1}{4}$	21	14	17
YG# PF $\frac{1}{8}$ $\times$ PT $\frac{1}{4}$	PF $\frac{1}{8}$	PT $\frac{1}{4}$	19	14	17
YG# PF $\frac{1}{4}$ $\times$ PT $\frac{1}{8}$	PF $\frac{1}{4}$	PT $\frac{1}{8}$	15	11	14

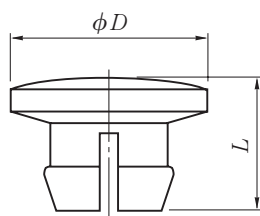
※The joint can't be inserted in a part of flange housing type.  
For further details, consult NTN.



**Designation and dimension for steel plug**

Units : mm

Designation	$d$	$H$	$D$
YA# $\frac{1}{4}$ -28UNF	$\frac{1}{4}$ -28UNF	4	8
YA# PF $\frac{1}{8}$	PF $\frac{1}{8}$	5	12
YA# PF $\frac{1}{4}$	PF $\frac{1}{4}$	7	15



**Designation and dimension for resin plug**

Units : mm

Designation	$D$	$L$
Y6# $\frac{1}{4}$ -28UNF	9	6
Y6# PF $\frac{1}{8}$	13	7.9
Y6# PF $\frac{1}{4}$	16	10.7

※Only room temperature