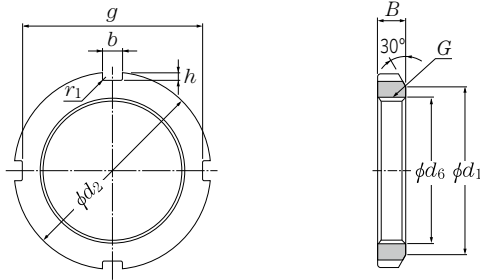


(For withdrawal sleeve)
Series HN

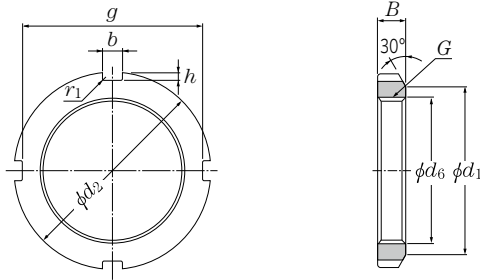


| Number | Thread no. | Dimensions mm | | | | | | | Mass kg | | (approx.) Withdrawal sleeve no. | | |
|--------|------------|------------------|-------|-------|-----|-----|-------|-------|------------|------------------------|------------------------------------|---------|----------|
| | | $G^{1)}$ | d_2 | d_1 | g | b | h | d_6 | B | r_1 Max.(approx.) | AH240 | AH31 | AH241 |
| HN42 | Tr210 × 4 | 270 | 238 | 250 | 20 | 10 | 212 | 30 | 0.8 | 4.75 | AH24040 | AH 3138 | AH24140H |
| HN44 | Tr220 × 4 | 280 | 250 | 260 | 20 | 10 | 222 | 32 | 0.8 | 5.35 | — | AH 3140 | — |
| HN46 | Tr230 × 4 | 290 | 260 | 270 | 20 | 10 | 232 | 34 | 0.8 | 5.80 | AH24044H | — | AH24144H |
| HN48 | Tr240 × 4 | 300 | 270 | 280 | 20 | 10 | 242 | 34 | 0.8 | 6.20 | — | AH 3144 | — |
| HN50 | Tr250 × 4 | 320 | 290 | 300 | 20 | 10 | 252 | 36 | 0.8 | 7.00 | AH24048H | — | — |
| HN52 | Tr260 × 4 | 330 | 300 | 306 | 24 | 12 | 262 | 36 | 0.8 | 8.55 | — | AH 3148 | AH24148H |
| HN54 | Tr270 × 4 | 340 | 310 | 316 | 24 | 12 | 272 | 38 | 0.8 | 9.20 | AH24052H | — | — |
| HN56 | Tr280 × 4 | 350 | 320 | 326 | 24 | 12 | 282 | 38 | 0.8 | 10.0 | — | — | AH24152H |
| HN58 | Tr290 × 4 | 370 | 330 | 346 | 24 | 12 | 292 | 40 | 0.8 | 11.8 | AH24056H | AH 3152 | — |
| HN60 | Tr300 × 4 | 380 | 340 | 356 | 24 | 12 | 302 | 40 | 0.8 | 12.0 | — | — | AH24156H |
| HN62 | Tr310 × 5 | 390 | 350 | 366 | 24 | 12 | 312.5 | 42 | 0.8 | 13.4 | AH24060H | AH 3156 | — |
| HN64 | Tr320 × 5 | 400 | 360 | 376 | 24 | 12 | 322.5 | 42 | 0.8 | 13.5 | — | — | AH24160H |
| HN66 | Tr330 × 5 | 420 | 380 | 390 | 28 | 15 | 332.5 | 52 | 1 | 20.4 | AH24064H | AH 3160 | — |
| HN68 | Tr340 × 5 | 440 | 400 | 410 | 28 | 15 | 342.5 | 55 | 1 | 24.5 | — | — | AH24164H |
| HN70 | Tr350 × 5 | 450 | 410 | 420 | 28 | 15 | 352.5 | 55 | 1 | 25.2 | — | AH 3164 | — |
| HN72 | Tr360 × 5 | 460 | 420 | 430 | 28 | 15 | 362.5 | 58 | 1 | 27.5 | — | — | AH24168H |
| HN74 | Tr370 × 5 | 470 | 430 | 440 | 28 | 15 | 372.5 | 58 | 1 | 28.2 | — | AH 3168 | — |
| HN76 | Tr380 × 5 | 490 | 450 | 454 | 32 | 18 | 382.5 | 60 | 1 | 33.5 | — | — | AH24172H |
| HN80 | Tr400 × 5 | 520 | 470 | 484 | 32 | 18 | 402.5 | 62 | 1 | 40.0 | — | AH 3172 | AH24176H |
| HN84 | Tr420 × 5 | 540 | 490 | 504 | 32 | 18 | 422.5 | 70 | 1 | 46.9 | — | AH 3176 | AH24180H |
| HN88 | Tr440 × 5 | 560 | 510 | 520 | 36 | 20 | 442.5 | 70 | 1 | 48.5 | — | AH 3180 | AH24184H |
| HN92 | Tr460 × 5 | 580 | 540 | 540 | 36 | 20 | 462.5 | 75 | 1 | 55.0 | — | AH 3184 | AH24188H |
| HN96 | Tr480 × 5 | 620 | 560 | 580 | 36 | 20 | 482.5 | 75 | 1 | 67.0 | — | AHX3188 | AH24192H |
| HN100 | Tr500 × 5 | 630 | 580 | 584 | 40 | 23 | 502.5 | 80 | 1 | 69.0 | — | — | — |
| HN102 | Tr510 × 6 | 650 | 590 | 604 | 40 | 23 | 513 | 80 | 1 | 75.0 | — | AHX3192 | — |
| HN106 | Tr530 × 6 | 670 | 610 | 624 | 40 | 23 | 533 | 80 | 1 | 78.0 | — | AHX3196 | — |
| HN110 | Tr550 × 6 | 700 | 640 | 654 | 40 | 23 | 553 | 80 | 1 | 92.5 | — | — | — |

| (approx.) Withdrawal sleeve no. | | |
|------------------------------------|---------|--------|
| AH22 | AH32 | AH23 |
| AH2238 | AH 3238 | AH2338 |
| AH2240 | AH 3240 | AH2340 |
| — | — | — |
| AH2244 | — | AH2344 |
| — | — | — |
| AH2248 | — | AH2348 |
| — | — | — |
| — | — | — |
| AH2252 | — | AH2352 |
| — | — | — |
| AH2256 | — | AH2356 |
| — | — | — |
| AH2260 | AH 3260 | — |
| — | — | — |
| AH2264 | AH 3264 | — |
| — | — | — |
| — | AH 3268 | — |
| — | — | — |
| — | AH 3272 | — |
| — | AH 3276 | — |
| — | AH 3280 | — |
| — | AH 3284 | — |
| — | AHX3288 | — |
| — | — | — |
| — | AHX3292 | — |
| — | AHX3296 | — |
| — | — | — |

1) Thread shapes and dimensions are as per JIS B 0216 (metric trapezoidal screw threads).
Note: Number HN54 indicates dimensions that are not indicated in JIS B 1554.

(For withdrawal sleeve)
Series HNL



| Number | Thread no. | Dimensions mm | | | | | | | | Mass kg | (approx.) | | | |
|--------|------------|------------------|-------|-------|-----|-----|-------|-------|-----|------------|------------------------|-----------------------|-------|-----|
| | | $G^{1)}$ | d_2 | d_1 | g | b | h | d_6 | B | | r_1 Max.(approx.) | Withdrawal sleeve no. | | |
| | | | | | | | | | | | | AH30 | AH240 | AH2 |
| HNL41 | Tr205 × 4 | 250 | 232 | 234 | 18 | 8 | 207 | 30 | 0.8 | 3.43 | AH 3038 | — | AH238 | |
| HNL43 | Tr215 × 4 | 260 | 242 | 242 | 20 | 9 | 217 | 30 | 0.8 | 3.72 | AH 3040 | — | AH240 | |
| HNL47 | Tr235 × 4 | 280 | 262 | 262 | 20 | 9 | 237 | 34 | 0.8 | 4.60 | AH 3044 | — | AH244 | |
| HNL52 | Tr260 × 4 | 310 | 290 | 290 | 20 | 10 | 262 | 34 | 0.8 | 5.80 | AH 3048 | — | AH248 | |
| HNL56 | Tr280 × 4 | 330 | 310 | 310 | 24 | 10 | 282 | 38 | 0.8 | 6.72 | AH 3052 | — | AH252 | |
| HNL60 | Tr300 × 4 | 360 | 336 | 336 | 24 | 12 | 302 | 42 | 0.8 | 9.60 | AH 3056 | — | AH256 | |
| HNL64 | Tr320 × 5 | 380 | 356 | 356 | 24 | 12 | 322.5 | 42 | 1 | 10.3 | AH 3060 | — | — | |
| HNL69 | Tr345 × 5 | 410 | 384 | 384 | 28 | 13 | 347.5 | 45 | 1 | 11.5 | AH 3064 | — | — | |
| HNL72 | Tr360 × 5 | 420 | 394 | 394 | 28 | 13 | 362.5 | 45 | 1 | 12.1 | — | AH24068H | — | |
| HNL73 | Tr365 × 5 | 430 | 404 | 404 | 28 | 13 | 367.5 | 48 | 1 | 14.2 | AH 3068 | — | — | |
| HNL76 | Tr380 × 5 | 450 | 422 | 422 | 28 | 14 | 382.5 | 48 | 1 | 16.0 | — | AH24072H | — | |
| HNL77 | Tr385 × 5 | 450 | 422 | 422 | 28 | 14 | 387.5 | 48 | 1 | 15.0 | AH 3072 | — | — | |
| HNL80 | Tr400 × 5 | 470 | 442 | 442 | 28 | 14 | 402.5 | 52 | 1 | 18.5 | — | AH24076H | — | |
| HNL82 | Tr410 × 5 | 480 | 452 | 452 | 32 | 14 | 412.5 | 52 | 1 | 19.0 | AH 3076 | — | — | |
| HNL84 | Tr420 × 5 | 490 | 462 | 462 | 32 | 14 | 422.5 | 52 | 1 | 19.4 | — | AH24080H | — | |
| HNL86 | Tr430 × 5 | 500 | 472 | 472 | 32 | 14 | 432.5 | 52 | 1 | 19.8 | AH 3080 | — | — | |
| HNL88 | Tr440 × 5 | 520 | 490 | 490 | 32 | 15 | 442.5 | 60 | 1 | 27.0 | — | AH24084H | — | |
| HNL90 | Tr450 × 5 | 520 | 490 | 490 | 32 | 15 | 452.5 | 60 | 1 | 23.8 | AH 3084 | — | — | |
| HNL92 | Tr460 × 5 | 540 | 510 | 510 | 32 | 15 | 462.5 | 60 | 1 | 28.0 | — | AH24088H | — | |
| HNL94 | Tr470 × 5 | 540 | 510 | 510 | 32 | 15 | 472.5 | 60 | 1 | 25.0 | AHX3088 | — | — | |
| HNL96 | Tr480 × 5 | 560 | 530 | 530 | 36 | 15 | 482.5 | 60 | 1 | 29.5 | — | — | — | |
| HNL98 | Tr490 × 5 | 580 | 550 | 550 | 36 | 15 | 492.5 | 60 | 1 | 34.0 | AHX3092 | — | — | |
| HNL100 | Tr500 × 5 | 580 | 550 | 550 | 36 | 15 | 502.5 | 68 | 1 | 35.0 | — | — | — | |
| HNL104 | Tr520 × 6 | 600 | 570 | 570 | 36 | 15 | 523 | 68 | 1 | 37.0 | AHX3096 | — | — | |
| HNL106 | Tr530 × 6 | 630 | 590 | 590 | 40 | 20 | 533 | 68 | 1 | 47.0 | — | — | — | |
| HNL108 | Tr540 × 6 | 630 | 590 | 590 | 40 | 20 | 543 | 68 | 1 | 43.5 | — | — | — | |

1) Thread shapes and dimensions are as per JIS B 0216 (metric trapezoidal screw threads).