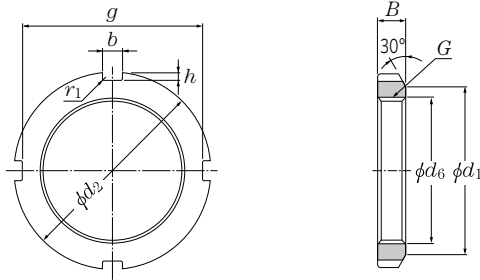


(For adapter sleeve, withdrawal sleeve and shaft)
Series AN

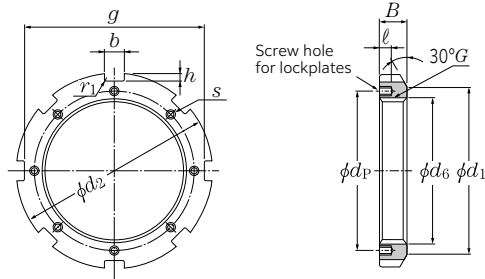


Number	Thread no.	Dimensions mm						Mass kg	(approx.)			
		d_2	d_1	g	b	h	d_6		B	r_1 Max.	Bore diameter no. of adapter ²⁾	Lockwasher no. ³⁾
AN00	M10 × 0.75	18	13.5	14	3	2	10.5	4	0.4	0.005	—	AW00
AN01	M12 × 1	22	17	18	3	2	12.5	4	0.4	0.007	—	AW01
AN02	M15 × 1	25	21	21	4	2	15.5	5	0.4	0.010	—	AW02
AN03	M17 × 1	28	24	24	4	2	17.5	5	0.4	0.013	—	AW03
AN04	M20 × 1	32	26	28	4	2	20.5	6	0.4	0.019	04	AW04
AN/22	M22 × 1	34	28	30	4	2	22.5	6	0.4	0.023	—	AW/22
AN05	M25 × 1.5	38	32	34	5	2	25.8	7	0.4	0.025	05	AW05
AN/28	M28 × 1.5	42	36	38	5	2	28.8	7	0.4	0.040	—	AW/28
AN06	M30 × 1.5	45	38	41	5	2	30.8	7	0.4	0.043	06	AW06
AN/32	M32 × 1.5	48	40	44	5	2	32.8	8	0.4	0.058	—	AW/32
AN07	M35 × 1.5	52	44	48	5	2	35.8	8	0.4	0.053	07	AW07
AN08	M40 × 1.5	58	50	53	6	2.5	40.8	9	0.5	0.085	08	AW08
AN09	M45 × 1.5	65	56	60	6	2.5	45.8	10	0.5	0.119	09	AW09
AN10	M50 × 1.5	70	61	65	6	2.5	50.8	11	0.5	0.148	10	AW10
AN11	M55 × 2	75	67	69	7	3	56	11	0.5	0.158	11	AW11
AN12	M60 × 2	80	73	74	7	3	61	11	0.5	0.174	12	AW12
AN13	M65 × 2	85	79	79	7	3	66	12	0.5	0.203	13	AW13
AN14	M70 × 2	92	85	85	8	3.5	71	12	0.5	0.242	14	AW14
AN15	M75 × 2	98	90	91	8	3.5	76	13	0.5	0.287	15	AW15
AN16	M80 × 2	105	95	98	8	3.5	81	15	0.6	0.397	16	AW16
AN17	M85 × 2	110	102	103	8	3.5	86	16	0.6	0.451	17	AW17
AN18	M90 × 2	120	108	112	10	4	91	16	0.6	0.556	18	AW18
AN19	M95 × 2	125	113	117	10	4	96	17	0.6	0.658	19	AW19
AN20	M100 × 2	130	120	122	10	4	101	18	0.6	0.698	20	AW20
AN21	M105 × 2	140	126	130	12	5	106	18	0.7	0.845	21	AW21
AN22	M110 × 2	145	133	135	12	5	111	19	0.7	0.965	22	AW22
AN23	M115 × 2	150	137	140	12	5	116	19	0.7	1.01	—	AW23
AN24	M120 × 2	155	138	145	12	5	121	20	0.7	1.08	24	AW24
AN25	M125 × 2	160	148	150	12	5	126	21	0.7	1.19	—	AW25
AN26	M130 × 2	165	149	155	12	5	131	21	0.7	1.25	26	AW26
AN27	M135 × 2	175	160	163	14	6	136	22	0.7	1.55	—	AW27
AN28	M140 × 2	180	160	168	14	6	141	22	0.7	1.56	28	AW28
AN29	M145 × 2	190	171	178	14	6	146	24	0.7	2.00	—	AW29
AN30	M150 × 2	195	171	183	14	6	151	24	0.7	2.03	30	AW30
AN31	M155 × 3	200	182	186	16	7	156.5	25	0.7	2.21	—	AW31
AN32	M160 × 3	210	182	196	16	7	161.5	25	0.7	2.59	32	AW32
AN33	M165 × 3	210	193	196	16	7	166.5	26	0.7	2.43	—	AW33
AN34	M170 × 3	220	193	206	16	7	171.5	26	0.7	2.80	34	AW34
AN36	M180 × 3	230	203	214	18	8	181.5	27	0.7	3.07	36	AW36
AN38	M190 × 3	240	214	224	18	8	191.5	28	0.7	3.39	38	AW38
AN40	M200 × 3	250	226	234	18	8	201.5	29	0.7	3.69	40	AW40

1) Thread shapes and dimensions are as per JIS B 0205-1 and JIS B 0205-4 (general metric threads).
2) Used for adapter series H31, H2, H3, and H23.
3) Washers with straight inner tabs that have code "X" after the number can also be used.

								(approx.) Withdrawal sleeve no.		Shaft dia. mm (for shaft)
AH30	AH240	AH31	AH241	AH2	AH32	AH3	AH23			
—	—	—	—	—	—	—	—	10		
—	—	—	—	—	—	—	—	12		
—	—	—	—	—	—	—	—	15		
—	—	—	—	—	—	—	—	17		
—	—	—	—	—	—	—	—	20		
—	—	—	—	—	—	—	—	22		
—	—	—	—	—	—	—	—	25		
—	—	—	—	—	—	—	—	28		
—	—	—	—	—	—	—	—	30		
—	—	—	—	—	—	—	—	32		
—	—	—	—	—	—	—	—	35		
—	—	—	—	—	—	—	—	40		
—	—	—	—	AH208	—	AH 308	AH2308	45		
—	—	—	—	AH209	—	AH 309	AH2309	50		
—	—	—	—	AH210	—	AHX310	AHX2310	55		
—	—	—	—	AH211	—	AHX311	AHX2311	60		
—	—	—	—	AH212	—	AHX312	AHX2312	65		
—	—	—	—	—	—	—	—	70		
—	—	—	—	AH213	—	AH 313	AH2313	75		
—	—	—	—	AH214	—	AH 314	AHX2314	80		
—	—	—	—	AH215	—	AH 315	AHX2315	85		
—	—	—	—	AH216	—	AH 316	AHX2316	90		
—	—	—	—	AH217	—	AHX317	AHX2317	95		
—	—	—	—	AH218	AHX3218	AHX318	AHX2318	100		
—	—	—	—	AH219	—	AHX319	AHX2319	105		
—	—	—	—	AH220	AHX3220	AHX320	AHX2320	110		
—	—	—	AH24122	AH221	—	AHX321	—	115		
—	—	—	—	AH222	—	AHX322	—	120		
—	AH24024	—	—	—	AHX3222	—	AHX2322	125		
AHX3024	—	AHX3122	AH24124	AH224	—	AHX324	—	130		
—	AH24026	—	—	—	AHX3224	—	AHX2324	135		
AHX3026	—	AHX3126	AH24126	AH226	—	AHX326	—	140		
—	AH24028	—	—	—	AHX3226	—	AHX2326	145		
AHX3028	—	AHX3128	AH24128	AH228	—	AHX328	—	150		
—	AH24030	—	—	—	AHX3228	—	AHX2328	155		
AHX3030	—	—	AH24130	AH230	—	—	—	160		
—	—	AHX3130	—	—	AHX3230	AHX330	AHX2330	165		
AH 3032	AH24032	—	AH24132	AH232	—	—	—	170		
AH 3034	AH24034	AH3132	AH24134	AH234	AH3232	AH332	AH2332	180		
AH 3036	AH24036	AH3134	AH24136	AH236	AH3234	AH334	AH2334	190		
—	AH24038	AH 3136	AH24138	—	AH3236	—	AH2336	200		

(For adapter sleeve and shaft)
Series AN

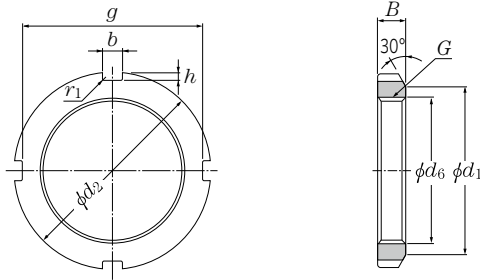


Number	Thread no.	Dimensions mm										Mass kg		
		Screw hole for lockplates												
		$G^{2)}$	d_2	d_1	g	b	h	d_6	B	r_1 Max.	l		$s^{2)}$	d_P
AN44	Tr220 × 4	280	250	260	20	10	222	32	0.8	15	M8	238	5.20	
AN48	Tr240 × 4	300	270	280	20	10	242	34	0.8	15	M8	258	5.95	
AN52	Tr260 × 4	330	300	306	24	12	262	36	0.8	18	M10	281	8.05	
AN56	Tr280 × 4	350	320	326	24	12	282	38	0.8	18	M10	301	9.05	
AN60	Tr300 × 4	380	340	356	24	12	302	40	0.8	18	M10	326	11.8	
AN64	Tr320 × 5	400	360	376	24	12	322.5	42	0.8	18	M10	345	13.1	
AN68	Tr340 × 5	440	400	410	28	15	342.5	55	1	21	M12	372	23.1	
AN72	Tr360 × 5	460	420	430	28	15	362.5	58	1	21	M12	392	25.1	
AN76	Tr380 × 5	490	450	454	32	18	382.5	60	1	21	M12	414	30.9	
AN80	Tr400 × 5	520	470	484	32	18	402.5	62	1	27	M16	439	36.9	
AN84	Tr420 × 5	540	490	504	32	18	422.5	70	1	27	M16	459	43.5	
AN88	Tr440 × 5	560	510	520	36	20	442.5	70	1	27	M16	477	45.3	
AN92	Tr460 × 5	580	540	540	36	20	462.5	75	1	27	M16	497	50.4	
AN96	Tr480 × 5	620	560	580	36	20	482.5	75	1	27	M16	527	62.2	
AN100	Tr500 × 5	630	580	584	40	23	502.5	80	1	27	M16	539	63.3	

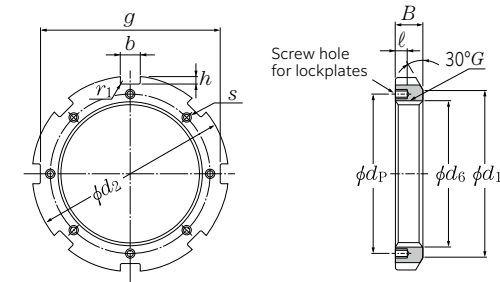
Bore diameter no. of adapter ³⁾	(approx.)	
	Lockplate no.	Shaft dia. mm (for shaft)
44	AL44	220
48	AL44	240
52	AL52	260
56	AL52	280
60	AL60	300
64	AL64	320
68	AL68	340
72	AL68	360
76	AL76	380
80	AL80	400
84	AL80	420
88	AL88	440
92	AL88	460
96	AL96	480
/500	AL100	500

1) Thread shapes and dimensions are as per JIS B 0216 (metric trapezoidal screw threads).
2) Thread shapes and dimensions of screw holes are as per JIS B 0205-1 and JIS B 0205-4 (general metric threads).
3) Used for adapter series H31, H32, and H23.

(For adapter sleeve and shaft)
Series ANL



Number	Thread no.	Dimensions mm							Mass kg	Bore diameter no. of adapter ²⁾	(approx.) Lockwasher no. ³⁾	Shaft dia. mm (for shaft)	
		$G^{1)}$	d_2	d_1	g	b	h	d_6					B
ANL24	M120 × 2	145	133	135	12	5	121	20	0.7	0.78	24	AWL24	120
ANL26	M130 × 2	155	143	145	12	5	131	21	0.7	0.88	26	AWL26	130
ANL28	M140 × 2	165	151	153	14	6	141	22	0.7	0.99	28	AWL28	140
ANL30	M150 × 2	180	164	168	14	6	151	24	0.7	1.38	30	AWL30	150
ANL32	M160 × 3	190	174	176	16	7	161.5	25	0.7	1.56	32	AWL32	160
ANL34	M170 × 3	200	184	186	16	7	171.5	26	0.7	1.72	34	AWL34	170
ANL36	M180 × 3	210	192	194	18	8	181.5	27	0.7	1.95	36	AWL36	180
ANL38	M190 × 3	220	202	204	18	8	191.5	28	0.7	2.08	38	AWL38	190
ANL40	M200 × 3	240	218	224	18	8	201.5	29	0.7	2.98	40	AWL40	200



Number	Thread no.	Dimensions mm							r_1 Max.	Screw hole for lockplates $s^{2)}$	Mass kg (approx.)		
		$G^{1)}$	d_2	d_1	g	b	h	d_6				B	l
ANL44	Tr220 × 4	260	242	242	20	9	222	30	0.8	12	M6	229	3.09
ANL48	Tr240 × 4	290	270	270	20	10	242	34	0.8	15	M8	253	5.16
ANL52	Tr260 × 4	310	290	290	20	10	262	34	0.8	15	M8	273	5.67
ANL56	Tr280 × 4	330	310	310	24	10	282	38	0.8	15	M8	293	6.78
ANL60	Tr300 × 4	360	336	336	24	12	302	42	0.8	15	M8	316	9.62
ANL64	Tr320 × 5	380	356	356	24	12	322.5	42	0.8	15	M8	335	9.94
ANL68	Tr340 × 5	400	376	376	24	12	342.5	45	1	15	M8	355	11.7
ANL72	Tr360 × 5	420	394	394	28	13	362.5	45	1	15	M8	374	12.0
ANL76	Tr380 × 5	450	422	422	28	14	382.5	48	1	18	M10	398	14.9
ANL80	Tr400 × 5	470	442	442	28	14	402.5	52	1	18	M10	418	16.9
ANL84	Tr420 × 5	490	462	462	32	14	422.5	52	1	18	M10	438	17.4
ANL88	Tr440 × 5	520	490	490	32	15	442.5	60	1	21	M12	462	26.2
ANL92	Tr460 × 5	540	510	510	32	15	462.5	60	1	21	M12	482	29.6
ANL96	Tr480 × 5	560	530	530	36	15	482.5	60	1	21	M12	502	28.3
ANL100	Tr500 × 5	580	550	550	36	15	502.5	68	1	21	M12	522	33.6

- 1) Thread shapes and dimensions are as per JIS B 0216 (metric trapezoidal screw threads).
- 2) Thread shapes and dimensions of screw holes are as per JIS B 0205-1 and JIS B 0205-4 (general metric threads).
- 3) Applied to adapter series H30.

Bore diameter no. of adapter ²⁾	(approx.) Lockplate no.	Shaft dia. mm (for shaft)	Number
44	ALL44	220	ANL44
48	ALL48	240	ANL48
52	ALL48	260	ANL52
56	ALL56	280	ANL56
60	ALL60	300	ANL60
64	ALL64	320	ANL64
68	ALL64	340	ANL68
72	ALL72	360	ANL72
76	ALL76	380	ANL76
80	ALL76	400	ANL80
84	ALL84	420	ANL84
88	ALL88	440	ANL88
92	ALL88	460	ANL92
96	ALL96	480	ANL96
/500	ALL96	500	ANL100

- 1) Thread shapes and dimensions are as per JIS B 0205-1 and JIS B 0205-4 (general metric threads).
- 2) Applied to adapter series H30.
- 3) Washers with straight inner tabs that have code "X" after the number can also be used.